

AUSTRALIA'S

HONEYBEE NEWS

"The Voice of the Beekeeper"
www.nswaa.com.au

Volume 14 Number 2
March - April 2021

Inside:

Executive Council Nomination Form Pg 16

Executive Meeting Update Pg 17

Branch News Pg 35

Tamworth Branch Field Day Pg 43

DENMAR APIARIES

ITALIAN

Prices effective from 1 July 2019

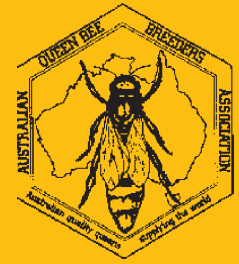
UNTESTED

1-10 \$32.00 each

11-49 \$28.00 each

50+ \$24.00 each

and isolated mated breeders = \$600.00



Join now

TERMS 7 DAYS

Late Payments - Add \$4 Per Queen

PAYMENT BY: Cheque or Direct Debit
Details on ordering

QUEEN BEES

PO Box 99 WONDAI Queensland 4606

Phone: 0448 690 064 Email: ausbee4@hotmail.com



A home fit for a Queen
Give your bees the best
Australian owned & manufactured
Quality Hoop Pine



Manufacturers of Quality Woodware from Australian-Grown Hoop Pine

- Buying all grades of wax
- Large range of beekeeping supplies

- Phone, Email and Bulk Orders welcomed
- Postage and freight options available

Manufacturing & Supply

806 River Road
Kingsley Q 4610
Main 0427 946 614
0429 130 167

bbeesupplies@bournet.com.au



Supply Outlet

Shed 9B Industrial Avenue
Morayfield Q 4125
Main 0484 598 580
0411 251 901

bbeesuppliesmorayfield@hotmail.com

Website: www.burnettbeekeepingsupplies.com.au

PROTECT YOUR BEEHIVES WITH WAX!

Paraffin + Microcrystalline wax

Hot dipping with a 50/50 mix of paraffin and microcrystalline
is an efficient steriliser and protector against rot.

bulk wax at wholesale prices!!

View the full product range on-line

*WAX *moulds *wicks *tea light cups *wicks and more...

www.candlemaking.com.au
02 9653 3600



Personal shoppers welcome
at our warehouse in Arcadia, in Sydney's rural north.
Always interested in purchasing local beeswax.

HONEY Down Under

Lloyd & Dawn Smith

Committed to maximising returns to beekeepers

Honey & Beeswax for sale? Call us for a quote

Phone 07 3271 2830 Fax 07 3376 0017

Mobile 0418 786 158

136 Mica Street, Carole Park Qld 4300

Email: hdunder@bigpond.net.au

Cover:
Mugga Ironbark
Stephen Targett



AUSTRALIA'S HONEYBEE NEWS

The official Journal of the NSW Apiarists' Association (NSWAA) www.nswaa.com.au

Published Bi-Monthly Email: honeybeenews@icloud.com ISSN 1835 6621

CONTENTS

| | | | |
|---|---------|------------------------------------|---------|
| Executive & Industry Contacts | Page 4 | Condolences | Page 30 |
| President's Report | Page 5 | NSWAA 2021 Conference Booking Form | Page 31 |
| NSWAA Executive Responsibilities | Page 6 | Bee Biosecurity Officer Report | Page 33 |
| NSWAA Honour Roll | Page 8 | AHBIC & MRLs | Page 34 |
| NSWAA Membership Renewal | Page 10 | Branch News | Page 35 |
| Sugar Shake Month | Page 13 | AgriFutures Plan Bee | Page 36 |
| Executive Council Nomination Form | Page 16 | NSWAA Honey Competition | Page 37 |
| Executive Meeting Update | Page 17 | Tamworth Branch Field Day | Page 43 |
| Burnt National Park Bee Sites | Page 17 | For Sale | Page 44 |
| Australian Bee Congree Save the Date | Page 18 | Friends of AHBIC | Page 46 |
| 2021 Trade Show | Page 24 | AHBIC Update | Page 47 |
| Technical Specialist, Honey Bees Report | Page 29 | Beekeeper Journals / Advertisers | Page 50 |

Pre-Paid Advertising Rates

| | FULL PAGE | HALF PAGE | QUARTER PAGE | EIGHTH PAGE |
|-----------------|---------------|---------------|---------------|---------------|
| | <i>Colour</i> | <i>Colour</i> | <i>Colour</i> | <i>Colour</i> |
| 6 Issues | \$2090.00 | \$1180.00 | \$640.00 | \$380.00 |
| 3 Issues | \$1180.00 | \$635.00 | \$350.00 | \$215.00 |
| 1 Issue | \$465.00 | \$260.00 | \$175.00 | \$120.00 |

Classified Ads up to 5 lines - \$40.00 (FREE TO MEMBERS)

Australia's Honeybee News goes free of charge to NSWAA members. Subscriptions are welcome - within Australia \$65.00

Overseas (airmail) AUS\$95.00 - Payable to NSWAA, PO Box 117, Narellan, NSW 2567, Australia Email: info@nswaa.com.au

The opinions expressed in articles published in *Australia's Honeybee News* are those of the authors and do not imply the endorsement of the NSWAA for the promotion of any product, goods or services mentioned unless specifically stated.

**Copy Deadline for Next Issue of Australia's Honeybee News
Friday 21 May 2021**

| | |
|-------------------------------|--|
| Editor: | Vikki Bingley PO Box 7425 Sutton NSW 2620 <i>N.B New Ad setup \$50.00 alterations \$15.</i> |
| Advertising Enquiries: | Mobile: 0427 552 001 Email: honeybeenews@icloud.com |
| Printer: | Impress Printers 2/55 Townsville Street Fyshwick ACT 2609 Phone: (02) 6280 4238 Email: terry.impress@iinet.net.au |

MEMBERSHIP SUBSCRIPTION RATES

*The Association Membership year runs
from: 1 March to 28 February*

Note: Rates from 1 March 2017

| | | | |
|---------------------------------|-----------------|----------|----------|
| 0 to | 10 hives | \$100.00 | 1 vote |
| 11 to | 200 hives | \$200.00 | 2 votes |
| 201 to | 400 hives | \$300.00 | 4 votes |
| 401 + | \$1.00 per hive | | 6 votes |
| 700 + | \$1.00 per hive | | 8 votes |
| 1001 + | \$1.00 per hive | | 10 votes |
| Over 1500 hives | \$1.00 per hive | | 12 votes |
| Affiliated/Retired/Student | \$65.00 | | 1 vote |
| Honeybee News subscriber/member | \$65.00 | | 0 vote |

MEMBERSHIP BENEFITS

- Provide a means for the commercial apiarists of NSW to be represented through a common organisation
- Lobby to maintain access to essential floral resources
- Help to secure your Industry's future
- Provide strong representation to Government
- Membership Badge
- Copy of Biosecurity Manual for Beekeepers
- Annual subscription to *Australia's Honeybee News* the NSWAA bi-monthly Journal & FREE classified advertisement in Journal
- Annual State Conference & Trade/Field Days
- Support beekeepers in all regions through 9 NSWAA Branches
- Provide opportunities to meet other beekeepers and NSW DPI representatives at meetings, workshops and conferences
- WFI - Insurance for Rural Business, Business & Strata - 1300 934 934. WFI provides commission to NSW Apiarists' Association (NSWAA) to help member benefits. Please let your local Area Manager know that you are a member to receive this benefit for the Association. - Ms Jane Jones Mob: 0417 943 451 E: jane.jones@wfi.com.au
- SCHUTZ (Australia) Pty Ltd - IBCs special members' rate

NSW APIARISTS' ASSOCIATION INC. EXECUTIVE COUNCIL



Ray Hull, Neil Bingley, Stephen Targett, Steve Cunial, Robyn Lewis, Brian Woolfe

PRESIDENT: Stephen Targett PO Box 325 NARRANDERA NSW 2700 Mob: 0428 649 321

Email: wally.56@hotmail.com

VICE PRESIDENT: Steve Cunial PO Box 771 GRIFFITH NSW 2680 Mob: 0448 627 291

Email: steve@cunialbeekeeping.com.au

Neil Bingley 101 Woodfield Rd SUTTON NSW 2620 Mob: 0428 487 105 Email: beez101@bigpond.net.au

Ray Hull PO Box 36 Kootingal NSW 2340 Mob: 0407 469 176 Email: hullshoneyfarm@outlook.com

Brian Woolfe 18 Dumaresq St GLEN INNES NSW 2370 Mob: 0429 032 019 Email: woolfe@exemail.com.au

SECRETARY/TREASURER: Robyn Lewis PO Box 117 Narellan NSW 2567

Mob: 0466 269 811 Email: info@nswaa.com.au Website: www.nswaa.com.au

BRANCHES

Central Tablelands
Hunter Valley
North Coast
Northern Tablelands
Riverina
Southern Tablelands
Sydney
Tamworth
Western Plains

PRESIDENTS

Mal Porter 02 6337 5383
Col Wilson 02 4930 4950
Stephen Fuller 0488 434 498
Richard Willis 0428 323 812
David Mumford 02 6959 2519
Laurie Kershaw 0428 628 731
Miskell Hampton 0437 913 831
Ray Hull 02 6760 3634
Bryn Jones 02 6887 2638

SECRETARIES

Debbie Porter 0429 375 383
Contact President
Col Maloney 02 6663 7051
Glenn McConnell 02 6732 3222
John Smith 02 6926 2227
Estelle Roberts 0423 658 060
Jane Flitter 0413 769 411
Norm Maher 0447 603 245
Lisa Mumford 02 6887 2638

AUSTRALIAN HONEY BEE INDUSTRY COUNCIL (AHBIC)

Chairman: Trevor Weatherhead

Executive Director: Helen Goodall

Ph: 0402 467 780 Email: ahbic@honeybee.org.au Website: www.honeybee.org.au

Mailing address: PO Box 42 Jamison Centre Macquarie ACT 2614

AGRIFUTURES - Honeybee & Pollination

Annelies McGaw Manager

Ph: 02 6923 6913 | 0407 987 738 Email: Annelies.McGaw@agrifutures.com.au Website: www.agrifutures.com.au

AUSTRALIAN QUEEN BEE BREEDERS ASSOCIATION (AQBBA)

Secretary: Mrs Paula Dewar, 157 Lake Moogerah Road Kalbar QLD 4309 Ph: 07 5463 5633 Email: AQBBA21@gmail.com

CROP POLLINATION ASSOCIATION (CPA)

Secretary: Mrs Debbie Porter, 135 Eusdale Road Yetholme NSW 2795 Ph: 02 6337 5383 Email: debbie.porter3@hotmail.com

HONEY PACKERS & MARKETERS ASSOCIATION (HPMAA)

Secretary: Mr Ross Christiansen Email: ross@superbee.com.au



PRESIDENT'S REPORT



Presidents Report

Memberships are due for renewal. This can **NOW** be done on line. For those that have already paid – thank you. Unfortunately, conference bookings cannot be done on the website. Please print the form out and send to the secretary. This will be the only NSWAA conference in three years. 2022 will be Congress and NSWAA most likely will only hold an AGM iaw the constitution.

By now you should have received a copy of the proposed changes to the Constitution to be voted on at the AGM. These will be presented in two motions.

We have already received nominations for the executive and there will be a ballot at the AGM. More executive nominations are welcomed.

The secretary and your executive are working on the AGM/Conference. At this stage it is full steam ahead. Two speakers that will be of particular interest to northern beekeepers are the Inland Railway going through the Pilliga forests and also Santos gas will be giving an update. Hopefully Forests NSW will also present at conference.

Please download the honey competition forms from the website and prepare some entries. Suellen is working tirelessly on this competition. Thank you Suellen for your initiative and hard work. Sponsorship for our conference is going well however there are still some silver levels available which give the sponsor a tradeshow booth and dinner speaker sponsorship is available. Thank you to Therese Kershaw for her hard work.

Congratulations to Stephen Fuller and Jonathon Monson on their appointment to the Agrifutures Honey Bee Research panel. Congratulation also to Danny Le Feuvre on being appointed to the Agrifutures Board.

NSWAA has been lobbying on your behalf. We have lobbied:

- OEH to have five year National Park bee site licences. Payment will be annually.
- For 50% freight subsidies for sterilization of bee equipment. This will not be available if you have been given an order to have gear sterilized or burnt.
- To have the 40m tree clearance on main road roadsides (Hon Andrew Constance directive) to be done by Forests NSW and be part of their timber quota (this

will reduce the logging rate in State Forests). Historically roadside timber has been burnt.

- DPI to have the BBO to focus on registered commercial beekeepers who have not submitted honey samples iaw the biosecurity regulations. If you sent your honey samples to Victoria for testing expect a phone call in July.
- DPI for increased commercial registration fees to fund a minimum of one full-time bee biosecurity compliance officer.
- DPI to have a biosecurity meeting. Early May we have been informed.
- Increased penalties for dumping on LLS land without a valid permit.
- OEH to have the planned Mar/Apr hazard reduction burns in Goobang National Park (mugga ironbark area) delayed to July/Aug.

A lot of beekeepers were severely affected by the drought. Some beekeepers had hives burnt with the bushfires. Now we have beekeepers losing hives due to flooding. As I write this the coastal areas of NSW are receiving record amounts of rain. Australia, a land of contrasts. **If help is required give a shout out.** NSWAA lobbied government to ensure beekeepers were included in flood assistance packages.

Mugga ironbark is budded and flowering and there are a lot of bees on this resource. In many cases four or five loads within 1km. This is similar to a pollination event which means a potential major biosecurity threat. Part of the biosecurity regulations states that a beekeeper cannot expose honey to robber bees. In the case of overcrowded mugga ironbark areas this means escape boards must be used. If any beekeepers spots a beekeeper standing honey near any other beekeepers bees then ring the biosecurity hotline and report this event with as much detail as possible.

The Business Plan workshop was a success. Thank you to those who gave up time to attend and freely gave their opinions and comments. Unfortunately the mediator (Tim Burfitt) recovery from surgery has not gone as smoothly as hoped and the business plan will not be in

this HBN. It will go up as an EBee before conference also printed in the conference papers. The executive plan is to have the plan ratified at the conference if members agree.

One item that stood out from the workshop was that NSWAA communication was not as good as it should be. I accept the blame for that. NSWAA has sent out more EBee's in the last 18 months than we have in the last 4 years. I have tried to include in my President's report what the executive are doing. Obviously I failed. For this I apologise.

In this HBN you will find an update from the Feb executive meeting and also the AHBIC meetings reference MRL's.

It has been brought to my attention that NZ beeswax foundation is being sold in Australia. Be aware that this wax is likely to contain miticide residue. This has the potential to contaminate our clean green Australian wax. You may save on foundation but then get paid less for your beeswax.

This is my last HBN presidents report. I have enjoyed my time as president. We have had droughts, COVID, bushfires and now floods. Hopefully the next president has calmer waters and less challenges. Thank you for your support.

Stephen Targett
President

APIARY COTS

Manufacturers and Suppliers of Beekeeping equipment

PO Box 5, Mt Nebo Road, Mt Nebo QLD 4520

Buy Australian Made

Hoop Pine Woodware - Frames - Supers
Queen Cages etc

Or your special requirements

Phone: 07 3289 8181 Fax: 07 3289 8231

Honey Wanted

We Look For:
100% Australian honey
Long term suppliers
Large quantity
Packed in IBCs

Call: 0430 112 002
Contact: Rosie
Auburn NSW 2144

NSW AA Executive Responsibilities

| Stephen Targett NSWAA President | Steve Cunial NSWAA Vice President | Neil Bingley NSWAA Executive Councillor | Brian Woolfe NSWAA Executive Councillor | Ray Hull NSWAA Executive Councillor | Bianca Giggins NSW DPI Advisor |
|--|---|--|--|--|--------------------------------------|
| AHBIC Diseases & Quarantine Committee State Conference Bee Industry Biosecurity Consultative Committee (BIBCC) | Sponsorships & Trade Show | AHBIC Resources Committee State Resources | Bee Industry Biosecurity Consultative Committee (BIBCC) State Advisory Group (SAG) | Honeyland | AHBIC Education Committee |

BEE SMARTER. WORK SMARTER.

Add efficiency, comfort and versatility with a multi-purpose loader from Avant Equipment Pty Ltd

Manufactured in Finland to the highest specifications, these machines are reliable and well designed for access, safety and ease of maintenance. Free call 1800 686 411 to organise your obligation free demo!



- ✓ Ability to load the truck from one side using telescopic boom
- ✓ Huge lifting capacity up to 1500kg
- ✓ Park sideways across truck
- ✓ Optional air-conditioned cabin
- ✓ Self Levelling Boom
- ✓ Prompt delivery Australia wide

- ✓ All terrain 4wd with outstanding stability
- ✓ Backed by a Family business for over 25 years
- ✓ Save time and man power
- ✓ Easy to access and operate
- ✓ Over 200 attachments
- ✓ Easy finance options available



1800 686 411 | sales@avantequipment.com | www.avantequipment.com

NSWAA Honour Roll 2021

Ecrotek

Select Harvests

Oz Armour

Lockwood

**Beekeeping
Supplies**

Browns Bees

Australia Pty Ltd

**Hornsby
Beekeeping Supplies**

**Australian
Honeybee Pty Ltd**

**Dalrymple View
Apiary Supplies**

**Hive and Wellness
Australia**

WFI

*Working together
supporting each other*

Steam

**For decapping, extractors,
wax reducer & wash down**



Fully Automatic Electric Steam Boilers

**Model shown ranges
from 3kW to 42kW**

- **Steam output from
5.7 to 66.8kg/hr.**
- **Models range from
1/3 h.p. (3kW) to
48 h.p. (480kW).**

Advantages

- Fast steam raising
- Compactly packaged & self contained, no plant room required
- 99% Thermal efficiency
- Low capital & low installation costs
- No boiler attendant required
(state regulations may limit maximum capacity)
- Simple installation requires only connection of water & electricity
- No flue – no fire
– no risk of explosion
– no fumes or smell
- No oil storage tank
– no oil deliveries
- Clean equipment & work area
- Can be installed adjacent to steam appliance in workspace
- Quiet & reliable operation – low maintenance cost
- Simple to operate & maintain – no sophisticated burner/ignition/draft controls – no fire brick maintenance
- Corrosion resistant, no tubes, gussets or stays – no heat transfer surfaces
- Low heating element replacement cost
- All spare parts available ex stock
- Comprehensive operating & maintenance instructions, wiring & piping diagrams accompany each boiler



**1/33 Maddox Street
Alexandria NSW 2015
Ph: (02) 8338 8660
Fax: (02) 8338 8661**

Australian family owned
company Est.1932
**144 Colchester Road
Bayswater North VIC 3153**
Ph: (03) 9462 6700
Agents in all other states

www.simonsboiler.com.au



Visit our new website
www.hummerbee.com
to learn about all of our
other available models:

Rough Terrain Forklifts

XRT XL XT_{2WD}

The classic Hummerbee
just got even better...

TURBO II

The Hummerbee Turbo is now more powerful, smoother, and faster than ever. Now featuring 56 hp being produced by a Tier 4 emissions compliant, Kohler turbo diesel engine. Diesel exhaust fluid is NOT required.

More power, a new maintenance - free articulation joint, easy to use joystick mast controls, digital gauge display, a quieter, redesigned transfer case, and the highest lift capacity in its class while being even more compact than before, make the Turbo II the most exciting Hummerbee yet.

A & O FORKLIFT

www.hummerbee.com



Call A&O Forklift to order today
800-943-8677



NSW APIARISTS' ASSOCIATION INC.

ABN: 89 417 216 326

OBJECTIVES OF THE ASSOCIATION

To provide a means whereby the apiarists of this state may be represented through a common organisation for the welfare of the Industry.

To provide relevant information on the production of apiary products and services produced in NSW and to ensure an adequate return to the apiarist, for their labour and capital in the Industry.

The Association is committed to increasing the demand for apiary products, disseminating information to Members, securing business concessions for members and protecting the natural resources valuable to bees.

To co-operate with the relevant government agencies in instructional and experimental work connected with the Industry.

To assist Members in their apicultural rights, secure effective legislation and administration in affairs affecting the Industry.

MEMBERSHIP BENEFITS

Membership of the Association provides beekeepers with a voice in industry affairs, either through the members' branch or through the Annual State Conference.

The Association's publication, *Australia's Honeybee News*, helps keep members abreast of political, technical and economic developments that affect their livelihood. It is published six times a year and is free to members.

Most importantly, membership of the Association directly supports the state's only organisation of professional beekeepers ... the only organisation that can help you survive.

The Association fights for better prices, better access to honey and pollen producing flora, better protection from agricultural chemicals and better research and development.

Voting in ballots is proportional to operational size and ranges from 1 to 12 votes depending on the number of hives owned.

BRANCH STRUCTURE

Anybody of not less than ten members may apply to the Executive Council for registration as a branch of the Association.

Branches run their own programs and conduct their own business. They also have the right to be represented at meetings of the Association's Executive Council.

Most members of the Association are also members of their local branch. Presently there are branches in the Central Tablelands, Hunter Valley, North Coast, Northern Tablelands, Riverina, Southern Tablelands, Sydney Metropolitan, Tamworth and Western Plains.

THE VOICE OF THE BEEKEEPER

President

Stephen Targett
PO Box 325, Narrandera NSW 2700
P: 0428 649 321 E: wally.56@hotmail.com

State Secretary/Treasurer

LRA Consulting Australia
Robyn Lewis
P: 0466 269 811

Contact Us

NSW Apiarists' Association Inc
PO Box 117, Narellan, NSW 2567
E: info@nswaa.com.au



NSW APIARISTS' ASSOCIATION INC.

ABN: 89 417 216 326

2021-2022 Membership Renewal Tax Invoice

Membership Name

Postal Address:

.....

Email

Contact (Mobile): (Home).....

Branch Membership Number #

The Association's current financial year ends on 28 February 2021 and your membership subscription is now due for renewal. Please complete this membership form and return it along with your payment to ensure your membership remains current.

**Complete the section below and return it along with your payment to
NSWAA Sate Secretary/Treasurer, PO Box 117, Narellan NSW 2567, or email to info@nswaa.com.au or
Fax: 02 9475 4152**

NUMBER OF HIVES: [must be completed] **Membership Type:**

| MEMBERSHIP RATES 2021-2022 | | | |
|----------------------------|--|----------------------------|--|
| | CATEGORY | VOTES | RATES (inc GST) |
| <input type="checkbox"/> | 0 - 10 hives | 1 vote | \$100 |
| | 11 - 200 hives | 2 votes | \$200 |
| <input type="checkbox"/> | 201 - 400 hives | 4 votes | \$300 |
| | 401+ hives (maximum of \$2000.00) | Variable, max. 14 votes | Insert number of hives.....x \$1/hive = \$..... |
| | Affiliated | 1 vote | Insert affiliated organisation & member no..... \$65 |
| | Student | 1 vote | Insert institution and student no..... \$65 |
| | Retired ie. no longer having hives | 1 vote | \$65 |
| | Honeybee News Subscriber Only | 0 vote | \$65 |
| | I would like to make a donation to the NSW Apiarists' Association Resource Fund (Please contact us for payment details.) | | |
| | TOTAL \$ | | |

PAYMENT METHODS:

Website ☐ www.nswaa.com.au ☐ Please charge my Credit Card (Visa / MasterCard) as per details below \$.....

☐ cheque / money order **Direct Deposit:** Direct Deposit: NSWAA Westpac Bank BSB: 032 710 Account: 264867

Ref: membership no.# & surname). **If paying by direct deposit, please email or fax a copy of your remittance advice.**

Card Number Expiry Date CVV

Name on credit card

Signature

Date

A Tax invoice will be forwarded on receipt of payment.

Office Use only.

Payment

Type/Date:

Received ☐

Master List ☐

HBN ☐

M/Card ☐



B-QUAL
Your guarantee
for quality
and hygiene



www.bqual.com.au

B-QUAL
Industry Owned Quality Assurance System

HOW DOES B-QUAL CERTIFICATION BENEFIT MY BUSINESS?

- Product integrity
- Quality Assurance
- HACCP based certification
- Regulatory Compliance
- Industry best practice
- Biosecurity
- Access to domestic & export markets

B-QUAL Certification also enables an enterprise to market its product under the B-QUAL logo to show that it meets the B-QUAL Industry Standards

Complete your training at home at your own pace!

For more information and to obtain a Certification Information Pack contact the B-Qual Certification team
www.bqual.com.au
 AUS-QUAL Pty Ltd
 Phone (07) 3361 9200 | Toll Free Number 1800 630 890
 email: bqual@ausqual.com.au

FACTORY DIRECT

Made in Australia by Danbar Plastics

BEEPLAS FOUNDATION SHEETS

Plastic Beehive Components


- Made in Australia for Australian conditions
- Top quality food grade high impact polystyrene
- Excellent tensile strength and impact resistance
- Natural cell size
- Mitred bottom corners
- 6mm engagement tongue



Buy NOW!! IN-STORE or ONLINE www.danbar.com.au

Contact:
 Danbar Plastics
sales@danbar.com.au
 Ph: (03) 5382 4740





AUSTRALIAN EXPORTERS

ABN 96 078 192 300

Queen Bees
 Prices include GST:

| | |
|--------------------------------|--------------|
| 1 - 10 | \$33.50 each |
| 11 - 49 | \$31.00 each |
| 50 - 100..... | \$29.00 each |
| OVER 100 (in total) | \$28.50 each |
| 200 and over - Discounts apply | |

Queen Rearing Manager: Rose Taylor - 0409 667 908

Package bees available October to March.....

Terms: Payment prior to delivery/pick-up

FOR ORDERS OR ENQUIRIES CONTACT:
ROSE and NICOLE TAYLOR / ROWENA

1800 024 432 FREE CALL from anywhere in Australia
 (Call from anywhere in Australia for the price of a local call)

IF UNANSWERED: (02) 6368 3788

Or write: 58 Marshalls Lane, Blayney, NSW 2799
 Email: aqbe@bigpond.com / Fax: 02 6368 3799

BEE ENGINEERING

MANUFACTURERS OF



BEEKEEPING MACHINES

WE SPECIALISE IN THE MANUFACTURE OF

STAINLESS STEEL

UNCAPPERS AND DEBOXERS

6 MODELS OF UNCAPPERS

TO SUIT EVERY APPLICATION

DEBOXERS

TO SUIT ALL BOX AND FRAME SIZES

Phone (08) 9259 0676

Email: bee@bee-engineering.com

PO Box 126 Parkwood
Western Australia 6147



AUTUMN IS SUGAR SHAKE SEASON

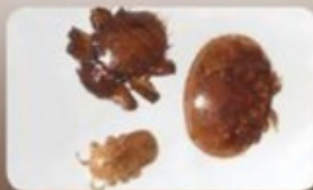
Bee Alert!

CHECK YOUR BEES USING THE
SUGAR SHAKE TEST
HELP DETECT AN EXOTIC PEST
INCURSION EARLY

SHAKE, INSPECT

CALL IF YOU SUSPECT

External bee parasites such as
varroa, tropilaelaps mite and braula fly
have not been detected in NSW



Braula fly (top), varroa mite (right),
tropilaelaps mite (bottom)



Braula fly on the thorax of a queen bee



Varroa mite feeds on a bee pupa

IF YOU NOTICE ANYTHING UNUSUAL CALL THE **EXOTIC PLANT PEST HOTLINE 1800 084 881**
FOR MORE INFORMATION VISIT WWW.DPI.NSW.GOV.AU/BIOSECURITY-BEES

Image credit: (left) Food and Environmental Research Agency (Fera), Crown Copyright | Image credit: (left) Lindsay Bourke | Image credit: (right) Scott Bevan, USDA



Amateur
Beekeepers
Association
NSW



**They know me.
They know my farm.
That's why I'm
insured with WFI.**



At WFI, we take the time to thoroughly understand your
business and how it operates. Because when we get to
know a business, we can protect everything that matters.

Call 1300 934 934 or visit wfi.com.au

backed by 

To see if our products are right for you, always read the PDS from
the product issuer, Insurance Australia Limited ABN 11 000 016 722
AFSL 227681 trading as WFI (WFI).



farm insurance

HEAT YOUR HONEY PLANT FOR LESS THAN \$30.00 A DAY!!!*



SELF CONTAINED HOT WATER RECYCLING SYSTEM

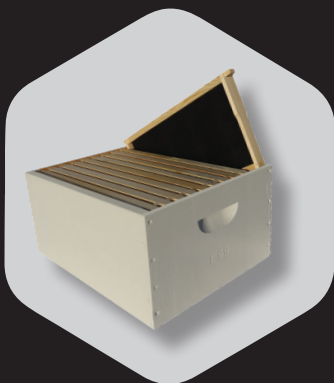
- Thermostatically Controlled
- Running at 98° +/-2°C
- Wash down hose & gun included in package
- Diesel Fired, Economical to run, 2 Litres per hour
- Simple & Reliable! 20 plus years of field service and counting!
- Under 3 amps power consumption**

Contact your nearest Branch 1800 774 892

We have branches in
Smithfield NSW, Rocklea QLD, Scorsby VIC and Wingfield SA
plus local distributors.

Or go to www.spitwater.com.au

*Based on a 10 hour working day ** In our field tests



10 frame full depth box ready to go
+ 10 assembled frames
+ 10 plastic foundations

| | |
|----------|-------------|
| 50-500 | \$55.00 AUD |
| 501-1000 | \$52.00 AUD |
| 1001+ | \$50.00 AUD |



8 Frame Full depth box ready to go
+ 8 assembled frames
+ 8 plastic foundations

| | |
|----------|-------------|
| 50-500 | \$53.00 AUD |
| 501-1000 | \$50.00 AUD |
| 1001+ | \$48.00 AUD |



Full depth box ready to go, 8 frame and
10 frame size

| | |
|----------|-------------|
| 50-500 | \$32.00AUD |
| 501-1000 | \$30.00 AUD |
| 1001+ | \$29.00 AUD |



WSP/Manley/Ideal box ready to go,
8 frame and 10 frame size

| | |
|----------|-------------|
| 50-500 | \$29.00 AUD |
| 501-1000 | \$27.00 AUD |
| 1001+ | \$26.00 AUD |



Flat pack Boxes rebated
Full depth/WSP/Manley/Ideal
8 frame and 10 frame size

| | |
|----------|-------------|
| 50-500 | \$17.50 AUD |
| 501-1000 | \$16.50 AUD |
| 1001+ | \$15.50 AUD |



Assembled and wired full depth frame,
32+35mm side

| | |
|---------------|------------|
| 1000-5000 | \$2.20 AUD |
| 5001-10,000 | \$2.10 AUD |
| 10,001-21,000 | \$2.00 AUD |
| 21,001+ | \$1.90 AUD |



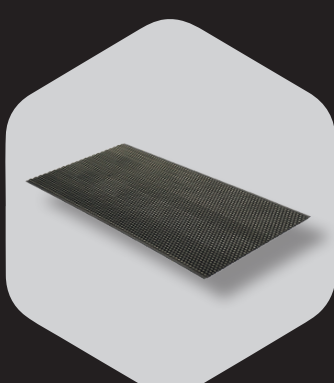
Assembled Full depth Frame for plastic
foundations, 32+35mm sides

| | |
|---------------|------------|
| 1000-5000 | \$1.75 AUD |
| 5001-10,000 | \$1.65 AUD |
| 10,001-26,000 | \$1.55 AUD |
| 26,001+ | \$1.45 AUD |



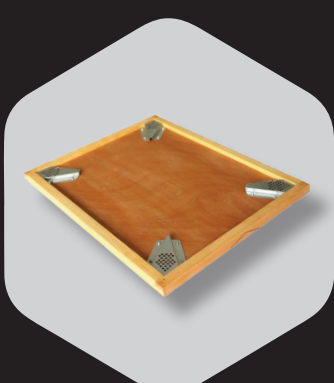
Full depth Frame feeder, wooden cover
and two plastic ladders 3.7 L 55mm
wide, 10 pcs per carton

| | |
|----------|-------------|
| 10-500 | \$12.50 AUD |
| 501-1000 | \$11.50 AUD |
| 1001+ | \$10.50 AUD |



Food grade plastic foundation,
Full depth/WSP/Manley/Ideal size

| | |
|-------------|------------|
| 150-1000 | \$1.20 AUD |
| 1001-5000 | \$1.10 AUD |
| 5001-10,000 | \$1.00 AUD |
| 10,001+ | \$0.95 AUD |



Bee escape, wax-dipped, 8 frame and
10 frame size

| | |
|----------|-------------|
| 50-500 | \$12.50 AUD |
| 501-1000 | \$11.50 AUD |
| 1001+ | \$10.50 AUD |

Riverina Beekeeping Supplies specialises in premium quality beekeeping equipment at a reasonable price. All equipment is tested and proven in daily use across our own large number of beehives.

We offer a vast amount of stock for basic equipment and fast delivery for your individual orders. Great discounts for larger quantities guarantees commercial beekeepers the best value. All equipment can be custom made in your own design and sizes. Ask us for individual prices.

Australia wide pallet or truck load shipping.

For sales or wholesale enquiries contact us
sales@riverinabeekeeping.com.au or
+61(0) 4588 52 293

For pricing and full
catalogue scan this!



RIVERINA
BEEKEEPING

GIORDAN

Riverina Beekeeping Supplies Pty Ltd is Australia's exclusive retailer of Giordan honey processing equipment - one of the leading manufacturers, made in Italy.

Download Riverina Beekeeping and Giordan catalogues at: www.riverinabeekeeping.com.au



NSW APIARISTS' ASSOCIATION INC.

ABN: 89 417 216 326

2021

NOMINATION FORM - EXECUTIVE COUNCIL

NOMINEE (Person you are nominating)

Name: Member No:
(please insert nominee name) (insert nominee member no.)

I hereby accept this nomination.

Signed: Date

NOMINATOR

I Member No:
(please print your name) (insert your membership number) hereby
nominate the person listed above as the Nominee for a position on the NSW Apiarists' Association Inc. Executive
Council.

Signed: Date

SECONDER

Name: Member No:
(please insert nominee name) (insert your membership no.)

hereby second the nomination of the person listed above as the Nominee for a position on the NSW Apiarists' Association Inc. Executive Council.

Signed: Date

- No Member of the Association shall be eligible for election to the Executive Council unless they reside in NSW or the ACT and has been a Financial Member for at least two successive years immediately prior to the date of the holding of the Annual Conference at which Nominations for election are received
- Each member shall be elected for a 2-year term and must retire from office at the Annual Conference held at the end of such 2 year term, but if eligible, may seek reappointment.

Return:

By Post to: Secretary/Treasurer, NSW Apiarists' Association, PO Box 117, Narellan NSW 2567
Or Email to: info@nswaa.com.au or Fax: 02 9475 4152

This form must be received by NSWAA no later than 5pm, 28th April 2021

President
Stephen Targett
PO Box 325, Narrandera NSW 2700
P: 0428 649 321 E: wally.56@hotmail.com

State Secretary/Treasurer
LRA Consulting Australia
Robyn Lewis
P: 0466 269 811

Contact Us
NSW Apiarists' Association Inc
PO Box 117, Narellan NSW 2567
E: info@nswaa.com.au



Executive Meeting Update

23rd Feb 2021

NSWAA has asked state govt for a 50% freight subsidy to get be gear sterilized.

OEHL have been asked to consider five year bee site licences.

NSWAA have requested LLS increase fines for dumping on LLS land without a valid permit.

Insuring bees is impossible after the bushfires. We can insure woodwork but not bees. AHBIC are exploring this. NSWAA will be making ministers aware that we cannot insure our livestock which generate our income.

Website is now capable of renewing memberships on line. However conference registration cannot be done on line.

Honeyland – NSWAA will not be at the RAS this year. Sydney Branch were asked if they could provide a bee presence and have made a video and will have members there to provide answers to the public.

The taster taps need repairing as they leak.

Business Plan – Tim Burfitt will produce a document



Specialising in
Caucasian
Queen Bees

| | | |
|---------------------|-------|--------------------|
| Marked Queens | ----- | \$40 ea |
| 1 – 9 | ----- | \$35 ea |
| 10 – 49 | ----- | \$30 ea |
| 50 – 199 | ----- | \$27 ea |
| 200 plus per season | ----- | Discounts Apply |
| Queen Cells | ----- | \$8 - collect only |

Breeder Queens - \$825

Naturally mated on a remote island.

Post & Handling \$15 per dispatch under 50 qty.

Prices include GST

Valid September 2019 to March 2020

Terms: Payment 10 days prior to dispatch.

For orders contact:

John Covey

Email: sales@coveybees.com.au

Ph: 0427 046 966

PO Box 72 Jimboomba QLD 4280

out of the workshop. The Business Plan to be ratified at Conference if members approve (will be in the conference folder). One item of note was that communications was not as good as it should be between NSWAA and members.

2021 Conference and AGM is going ahead. Planning is well underway. Two speakers of note are Inland Railway and Santos Gas. Hopefully Forests NSW will provide a speaker. There will be a dinner speaker.

Field Day – will be the Saturday following conference at the raceway.

Northern Tablelands branch submitted two motions. One was for a full time compliance officer. NSWAA is exploring this with DPI.

The other was whether Santos settling ponds water is safe for bees. Previously NSWAA had been informed that the last settling pond had a high salt content which may be an issue. NSWAA will try to get current information.

Constitution changes – main areas are to change to non for profit and around nominations for executive councillors. These changes will go to members as an E Bee and will also be in the conference folder.

Stephen Targett

Burnt National Park Bee Sites

If you have had bee sites burnt in a National Park and are aware of a possible bee site in an unburnt area in the same National Park, please give NSWAA the details.

Details such as:

- Your name;
- National Park;
- Bees site name/number; and
- Accurate description of the proposed beesite location – ideally with GPS coordinates.

NSWAA will liaise with OEHL to try to get the new bee site approved until the original bee site recovers.

Save the date

4th Australian Bee Congress

8-11 June 2022

**Rosehill Racecourse
Sydney NSW 2142
Australia**

Sponsorship and Trade Exhibition

Prospectus being launched soon



AUSTRALIAN QUEEN BEE LINE PTY LTD

ABN 88610746257 ACN:610746257

Italian and Carniolan Queens

| | | |
|---------------------|-------|---------------------------|
| 1 - 10 | ----- | \$32.00 each plus postage |
| 11 - 49 | ----- | \$30.00 each |
| 50 - 99 | ----- | \$28.00 each |
| Over 100 (in total) | --- | \$27.00 each |
| 200 and over | ----- | Discounts apply |



Prices GST Inclusive.

Postage & Handling applies for orders under 11

Terms: Payment prior to dispatch

Terms & Conditions apply. EFTPOS facility available

For Orders or Enquiries contact Charlie & Brenda Casido / Mely

Address: 21 Leewood Drive, Orange NSW 2800 or PO Box 80, Orange NSW 2800

Office Hours: 9.00am - 5.00pm Mon - Fri Ph: (02) 6369 0565 Fax: (02) 6369 0575

Email: info@australianqueenbeeline.com.au Web: www.australianqueenbeeline.com.au

Before & After Office Hours: Mobile 0434 353 301

BEEKEEPING MANAGED WELL

Productivity
software custom built for
commercial beekeepers

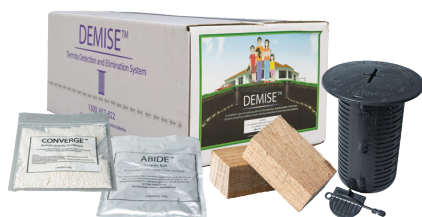
Visit us at: MyApiary.com
Call us at: +61 2 408 90639



DON'T SHUT YOUR DOOR ON TERMITES!

DEMISE™ TERMITE DETECTION & ELIMINATION SYSTEM

- Kills termites and wipes out the colony
- Easy to use in-ground traps
- Very low toxicity for humans and pets



Demise Kit includes: 10 Demise Bait Stations, 4 X 100g of Abide,
5 X 50g of Convergence, 20 Baitwood blocks



www.pestcontroldirect.com.au

Protect Your Hives!

Control Small Hive Beetles



APIS Small Hive Beetle Traps in conjunction
with **Topbait™ PLUS** or **APIS Sticky Boards**
will help put you back in control of your hives!

Topbait™ PLUS is registered for use within bee hives by the APVMA.

**TOPBAIT™
PLUS**

APVMA Approval #68330/108733

www.pestcontroldirect.com.au



*Electric
AWD
Pro Model

Kaptarlift

Electric & Manual Hive Trolleys

The ultimate beehive trolleys
built for Australian conditions.

- Lifts up to 100kg
- Maximum lifting height: 107cm
- Clamping width: 38cm to 70cm
- Chain Lifting (not belts)
- Wide Wheels 15/6.00-6 - ideal for sand
- Wheel drive through central differential*
- Driving speed: 0 to 6.5km/h with smooth speed control*
- Self-Lifting function - so no problem loading/unloading on to your vehicle*
- Differential motor 500W*
- Lithium Ion Battery - maintenance-free 24V 20.8Ah*
- Battery operation: typically, 4 hours*



Contact

BEESWISE

Australian Distributor

T: 1800 233 947

E: bees@beewise.com.au

www.beewise.com.au

APIMAYE HIVES

Next Generation Bee Hive

- Apimondia Gold Medallist
- Bee Friendly HDPE Plastic
- Thermal Insulation & Active Ventilation
- High Productivity & Long Economic Life



Everything in One Package

- Queen Excluder
- Pollen Trap
- Multifunctional Hive Entrance
- Top Feeder
- Lock and Latch Handles
- Division & Uniting Board
- Removable Bottom Tray

Distributed Australia wide by:

T: 1800 233 947 E: bees@beewise.com.au



BEESWISE

BECOME A BERRINGA BEEKEEPER

At Berringa, we've proudly supported Aussie beekeepers for 25 years and we're always on the lookout for new suppliers.

What are the advantages of being a Berringa beekeeper?

We're 100% Australian owned and operated

- ✦ All Berringa products are 100% Australian sourced.
- ✦ From Eucalyptus and Manuka to honeycomb and beeswax, we believe Aussie honey is unbeatable.
- ✦ Based in Melbourne, the Berringa team is always on hand to answer your queries.

We're transparent

- ✦ All Manuka is independently tested.
- ✦ We pay our beekeepers based on independent laboratory results. Our quality standards include ACO, Codex, BSafe and TGA.

We care about our beekeepers

- ✦ Drum and IBC supply is free for our regular Manuka suppliers.
- ✦ Our dedicated procurement managers and friendly customer service team are on hand to offer beekeeper support.

Be part of a company that drives Australian honey in the international and domestic markets. Talk to our friendly procurement and supply team today.



Contact:
Geoff Lord - Procurement Manager
m: +61 417 598 201 t: +61 3 8456 3543
e: geoff.lord@berringa.com
Berringa Customer Service
t: +61 3 8456 3543 e: beekeepers@berringa.com
berringa.com

BERRINGA.



Australian Organic Honey Company Pty Ltd
24 Westside Dr, Laverton North VIC 3026, Australia



Bee Build

It does what it says—**Builds BEE\$**

A Complete Pollen Replacement based on
Scientific Honeybee Industry Research
(Fat Bees, Skinny Bees—RIRCD Pub No. 05/054)

Visit www.beebuild.com.au

for full story and how to feed.

Available in 5kg, 10kg, 20kg or 25kg

Bee Build Protein Sausage: 500gm and 1kg

Bee Boost: 500g—a probiotic for bees

Enquiries and Sales Contact:

Robert & Melissa Dewar

Ph: (07) 5463 5513

www.beebuild.com.au

As one of Australia's largest
packers of pure Australian honey,
Superbee Honey Factory is
LOOKING FOR SUPPLIERS
to support our increasing demand
for Australian Honey



CONTACT US TO REQUEST A QUOTE OR
BOOK A DELIVERY
PH: 02 6851 1155
BEN SMITH EMAIL: ben@superbee.com.au

Bee Wonderful PTY LTD
ABN. 37 113 160 571
Cnr Newell Hwy &
Landrace Rd
FORBES NSW 2871
PH: 02 6851 1155
www.superbee.com.au

PAYMENT IN 14 DAYS OR LESS

Clayton Plastics

Servicing the honey industry for over 40 years.

Jars & Squeezes



250gr & 500gr
Square Jars



300ml Twist
& Squeeze



500gr Squeeze
(Honey Comb)



500gr Upside
Down Squeeze



250gr & 500gr
Amber Jars

Pails



Non Tamper Proof Pails

500gr, 1kg, 1.5kg, 3kg, & 5kg Pail
(500gr, 1kg, 1.5kg available in clear as well)



Tamper Proof Pails

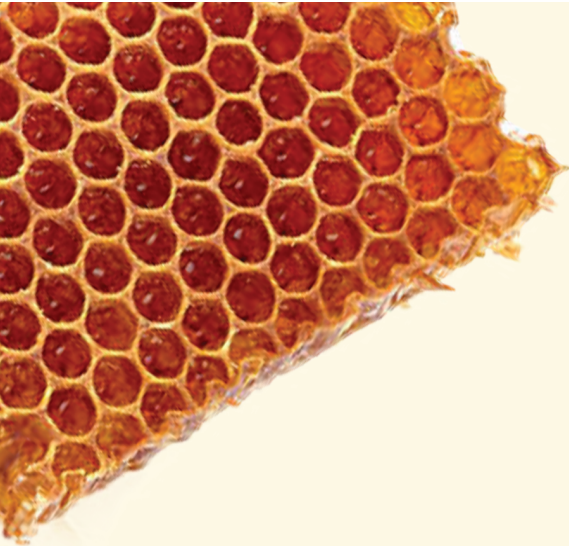
1kg, 1.5kg Honey Pails &
2.2L, 5L Pails

10L, 15L, 20L Pails

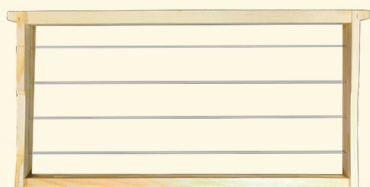
AK
AU KINGSUN

Clayton Plastics

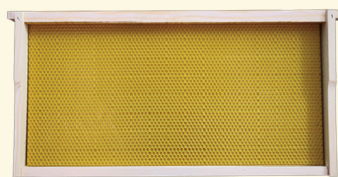
www.claytonplastics.com.au



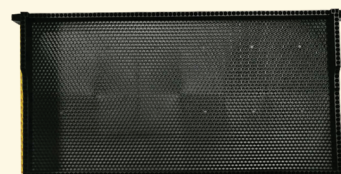
Bee Frames - Wood and Plastic



Wood Frame Full Depth
Assembled With Wire



Wood Frame Full Depth
With Plastic Foundation
(Not waxed)



Plastic Frame Full Depth

Plastic Beehive

Plastic Beehive with 10 Frames

Material: food grade polypropylene

Thickness: 30mm

Working life: 30 years

Packing dimension: 60x50x44cm 13.8/kg

Features:

- UV resistant
- Thermal insulated increasing honey production
- Light weight for easy lifting and carrying
- Antioxidant plastic material for longer life expectancy
- Holds standard and full depth frames
- Easily assembled
- Digital Thermometer
- Built in ventilation
- No painting required

What you get:

2 box hive consisting of:

- 1 x ventilated top cover
- 1 x full size super
- 1 x Queen excluder
- 1 x brood box
- 1 x bottom board (including 2 feeders and pollen trap)
- 1 x Entrance reducer
- 4 x Lock, Latch connectors
- 1 x Temperature Gauge





NSWAA PARTNERS



2021

Platinum Partner

Ecrotek

Gold Partners

Oz Armour

Select Harvests

Wine & Cheese Night Partner

Lockwood Beekeeping Supplies

Annual Dinner Partner

Browns Bees Australia Pty Ltd

Tea Break Partner

Hornsby Beekeeping Supplies

Conference Dinner Speaker Partner

Australian Honeybee Pty Ltd

Emerging Honey Bee Partner

Dalrymple View Apiary Supplies

Business Workshop Partner

Hive & Wellness — Australia

New South Wales Apiarists' Association appreciates your support



NSWAA TRADE SHOW



Exhibitors 2021

Australian Honeybee Pty Ltd

Australian Manuka Honey Association

Avant Equipment

Browns Bees Australia Pty Ltd

Dalrymple View Apiary Supplies

Ecrotek

Ensystex

Hornsby Beekeeping Supplies

Lockwood Beekeeping Supplies

Lyson Beekeeping Supplies

M & K Stafford Engineering Pty Ltd

My Apiary

New Horizons

Nuplas Apiarists Supplies

Oz Armour

Prestige Stainless Pty Ltd

Prostate Cancer Foundation of Australia

Riverina Beekeeping Supplies Pty Ltd

Schutz Australia

Select Harvests

Spitwater

Termseal Australia Pty Ltd

Trade Show

19th May 9am to 5pm

20th & 21st May throughout Conference



**WORLD FIRST SCIENTIFIC
BREAKTHROUGH**

**Strong Microbials
SuperDFM® - HoneyBee™**

**Healthy Beehives,
Happy Bees.**

**ONLY AVAILABLE
IN AUSTRALIA
FROM NUPLAS
APIARIST SUPPLIES**

As a passionate beekeeper, we understand how much you want to keep your bees healthy. Pathogens are a real threat to your bees health and often can affect beehives rapidly. Nuplas is excited to announce SuperDFM-Honeybee™ produced by Strong Microbials Inc.

This world first scientific breakthrough is a safe formulation that stimulates your bee's health, digestion, and provides additional health benefits to your bees.

SuperDFM-Honeybee™ helps stimulate immunity to be ready for pathogen challenges. These good microbes help your bees have a healthy gut and prevent pathogens from sticking around. And for those pathogens that are already present, SuperDFM-Honeybee™ enables them to be excreted off naturally.

All natural, 100% safe to use anytime of the year – even during the nectar flow! Created by microbiologists for your honeybees' health! In Australia, you can now only purchase SuperDFM-Honeybee™ from Nuplas by visiting their website. Because healthy bees are happy bees!

ORDER NOW & DON'T MISS OUT!

nuplasapiaristsupplies.com.au
03 5032 9199

**better
beekeeping.**

SPECIAL OFFER!!! INTRODUCING THE 'INCI' 4 FRAME MANUAL HONEY EXTRACTOR

Whether you're a first-timer or experienced beekeeper, a serious apiarist needs to extract honey properly in order to obtain optimal amounts of the sweet stuff whilst staying safe.

The INCI 4-Frame stainless steel honey extractor is designed to hold up to 4 frames and is simple to use. It includes a propeller and plexiglass cover and is made from food grade, highly durable stainless steel.

**UNBELIEVABLE QUALITY AT THE SPECIAL PRICE
OF ONLY \$497.**



Scientifically tested to increase the health of your bees.

STRONG MICROBIALS
Strong Microbes for a Stronger World



Special prices

for all your
beekeeping needs



Assembled and wired frames:

Minimum order quantity = 1000

\$2.20

Assembled Double Groove Frames:

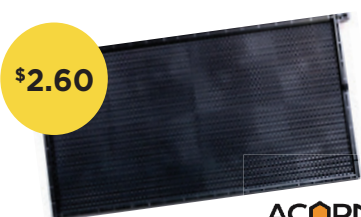
Minimum order quantity = 1000



\$1.65

Plastic Frame Full Depth:

Minimum order quantity = 1000



\$2.60

ACORN
BEEKEEPING EQUIPMENT

Plastic Foundation Made in USA:

Minimum
order quantity = 2000



\$1.43

Box Full Depth 8/10-Frames. Finger Joints, screwed, wax dipped and painted:

Minimum order quantity = 150



\$33.00

\$20.00



Box Standard Grade Finger Joint 8/10-Frames:

Minimum order quantity = 150

Box Standard Grade Rebated 8/10-Frames:

Minimum order quantity
= 150



\$17.00



Drone Comb Frames:

Minimum order quantity = 1000

ACORN
BEEKEEPING EQUIPMENT



\$2.85

Coloured Box Waxed Dipped and Painted 8/10-Frames:

Minimum order
quantity = 150

\$34.50



**We can customise
your boxes.** Your brand, your
colour, your dimensions!!!



Call or visit us today.

Hornsby Branch

63A Hunter Lane Hornsby NSW 2077
Phone: 02 9477 5569 | Fax: 02 9477 7494
Trading hours: Mon – Fri 9am – 5pm
Sat 9am – 4pm

info@hornsby-beekeeping.com | hornsby-beekeeping.com

Mt Druitt Branch

Unit 11, 71 Kurrajong Ave Mt Druitt NSW 2770
Phone: 02 9625 5424 | Fax: 02 9625 7589
Trading hours: Mon – Fri 10am – 6pm
Sat 10am – 5pm



Hornsby
Beekeeping Supplies
For all your beekeeping needs

Technical Specialist, Honey Bees Report

Elizabeth Frost

Technical Specialist, Honey Bees

Total Agricultural College, NSW Dept. of Primary Industries

T: 02 4939 8821 M: 0437 731 273 E: elizabeth.frost@dpi.nsw.gov.au



Flooding and honey bees

The March 2021 floods across Eastern Australia have had wide-reaching effects on homes, farms and landscapes. I hope you all kept out of harm's way during this significant storm period. If you have had hives or other damage related to primary production, please complete this survey. The survey responses are used to inform government response, so your experience is vital, helping guide available assistance to industry:

www.dpi.nsw.gov.au/climate-and-emergencies/emergency/community/primary-industries-natural-disaster-damage-survey

ASSISTANCE

The NSW and Australian Governments have announced assistance measures to support people who have been impacted by the March 2021 storms and floods, including \$75,000 grants for affected primary producers and \$50,000 grants for small business owners.

Assistance is now being provided to 63 local government areas in NSW through the jointly funded Commonwealth-State Disaster Recovery Funding Arrangements.

Visit the **RAA's Declared Natural Disasters webpage** for a full list of eligible LGAs: www.raa.nsw.gov.au/disaster-assistance/declared-natural-disasters

Primary Producers

Primary producers recovering from the devastating impacts of floods can receive vital support, with **Special Disaster Grants** of up to **\$75,000**. Visit the RAA Disaster Assistance webpage for eligibility and application instructions and assistance: www.raa.nsw.gov.au/disaster-assistance/special-disaster-grants-floods

Small Business Grants

Grants of up to \$50,000 will also be available for small business owners and not-for-profit organisations through Service NSW. For more information contact the Disaster Customer Care Service on 13 77 88 or visit www.service.nsw.gov.au/.

Key Contacts for flood and other natural disaster (put these in your phone!)

Emergency Assistance - 000

SES - 132 500

Disaster Customer Care Service - 13 77 88

AASFA for emergency animal assistance - 1800 814 647

Local Land Services (LLS) - 1300 795 299

Rural Assistance Authority (RAA) - 1800 678 593

The **DPI Flood Response** webpage is updated as information becomes available (www.dpi.nsw.gov.au/floods) and assistance guide for primary producers is also listed here:

www.dpi.nsw.gov.au/_data/assets/pdf_file/0009/1299222/Natural-disaster-assistance-guide-primary-producers.pdf



Figure 1. Stanislav Nenov and Elizabeth Frost loading Plan Bee breeder nucs ahead of rising floodwaters at Total College during the March NSW floods.

IMMEDIATE POST-FLOOD CLEANUP

Where floodwaters have passed through an apiary, receded and hives are still living once you're able to access the apiary, there are immediate tasks to undertake. Any comb that went under water is potentially damaged and contaminated, and any brood that went under water is likely dead. This must be dealt with immediately if you want to give your hive any chance at recovery.

1. **If the floodwaters were muddy and silty, comb must be culled and burnt.** This is necessary as your frames, a food-producing material, are now contaminated and no longer "food safe." Additionally, it is a big ask for your bees to rehabilitate this contaminated material and a target for small hive beetle, potentially creating even bigger problems.
2. **If floodwaters were clean and uncontaminated, prevent small hive beetle infestation** by removing frames of dead brood and installing small hive beetle traps or harbourages. If small hive beetle larvae are already present, cull affected frames or potentially entire colonies depending on the severity of the infestation and colony strength.



Figure 2. Small hive beetle larvae populations can explode in flood damaged hives, even if the hive has initially survived the flood.

3. Assess your colony's likelihood and cost of recovery:

- a. Does the adult bee population justify the labour and inputs (i.e. new comb, supplemental feed, new queen) necessary to recover it to full strength and productivity?
- b. Is a laying queen present?
- c. Is it disease free?

Tough decisions are necessary if the answer to 3a, 3b or 3c above is "no." If the adult population is too small to justify the labour and inputs to bring it back up to production strength and it is disease and pest free, it could be combined with another colony. If the colony also has disease or pests present, it may be necessary to cull the entire colony. If the colony is weak and queenless and you have no access to mated queens, this may also be a chance to combine the remaining bees and salvageable comb with another colony. Where sufficient numbers of adult bees can cover any brood present, assess the overall space required according to available resources. We're in autumn, so reducing colony size according to the population is a management task we're already doing to prepare for winter.



Our thoughts and sympathies are with the Porter families who lost a loved one much too soon.

We know his life brightened yours.

His memories will be cherished forever.

4. Where recovery is possible supplemental feed **sugar syrup** and possibly protein supplement, though monitor for small hive beetle activity depending on the protein supplement. Remember, building new comb is only possible when your bees are on a nectar flow or receiving supplemental feed over and above their immediate needs for survival.



Figure 3. A Plan Bee five-frame nucleus colony shown feeding on internally-fed, dry, irradiated pollen.

In times of scarce floral resources or recovery from drought, bushfire, or flood, the beekeeper should feed supplemental sugar syrup and protein (irradiated pollen shown in Figure 3) to firstly assist with the colony's recovery and second to maintain the colony in good condition for the next honey production or pollination event. For additional information on supplemental feeding can be accessed from the Nutrition tab in the NSW DPI 'Managing your hives' web page: www.dpi.nsw.gov.au/animals-and-livestock/bees/management

WANTED

Articles on what your branch has been doing

Upcoming meetings or events

Articles you would like to see published

Photographs for the cover

Email to honeybeenews@icloud.com

2021 Conference Booking Form

West Tamworth Leagues Club - 20 & 21 May 2021

| | | | |
|---|--|--|---------------------|
| 2021 DELEGATE DETAILS | | Delegate (s) Name (s): | |
| <input type="checkbox"/> NSWAA Member (Insert number)..... | | <input type="checkbox"/> Other Apiarists' Association Member Association..... Member No | |
| <input type="checkbox"/> Non-member | | | |
| Mailing Address: | | | |
| Phone/Mobile: | | Email: | |
| A - FULL CONFERENCE REGISTRATION - Each registration includes all conference sessions on Thursday, 20th & Friday, 21st May 2021, access to the Trade Show and one (1) ticket to the Wine & Cheese night, morning tea and lunch both days | | | |
| Member (includes members of other Apiarist Associations) | | <input type="checkbox"/> | \$250 |
| Partner of a Member (Insert partner name) | | <input type="checkbox"/> | \$170 |
| Non-Member..... | | <input type="checkbox"/> | \$350* |
| EARLY BIRD RATES - if paid by 16th April 2021 | | | |
| Member ((includes members of other Apiarist Associations) | | <input type="checkbox"/> | \$125 |
| Partner of a member (Insert partner name)..... | | <input type="checkbox"/> | \$ 85 |
| Non-Member..... | | <input type="checkbox"/> | \$175* |
| * Non-members tick here <input type="checkbox"/> if you do not wish to automatically become a base level member of the NSW Apiarists' Association | | | |
| B - BUSINESS WORKSHOP – FREE | | | |
| Wednesday, 19th May 2021 – 1:00 – 4:00PM – Sponsored by NSWAA | | | |
| • Business Workshop -. | | | |
| C - ADDITIONAL TICKETS - Please purchase one day tickets, dinner tickets and any additional wine & cheese night tickets here | | | |
| One Day Member (includes members of other Apiarist Associations) | | <input type="checkbox"/> Day 1 or <input type="checkbox"/> Day 2 | \$150 |
| One Day Partner of a Member (Insert partner name)..... | | <input type="checkbox"/> Day 1 or <input type="checkbox"/> Day 2 | \$100 |
| One Day Non-Member | | <input type="checkbox"/> Day 1 or <input type="checkbox"/> Day 2 | \$180 |
| EARLY BIRD RATES - if paid by 16th April 2021 | | | |
| One Day Member (includes members of other Apiarist Associations) | | <input type="checkbox"/> Day 1 or <input type="checkbox"/> Day 2 | \$100 |
| One Day Partner of a Member (Insert partner name)..... | | <input type="checkbox"/> Day 1 or <input type="checkbox"/> Day 2 | \$ 70 |
| One Day Non-Member | | <input type="checkbox"/> Day 1 or <input type="checkbox"/> Day 2 | \$125 |
| Annual Dinner –Sponsored by (TBA) - Friday, 21st May 2021 | | No. Attending @ \$55 / person | |
| Please advise if you any special dietary requirements <input type="checkbox"/> Yes <input type="checkbox"/> No. Details (if applicable) | | | |
| Wine & Cheese Night sponsored by TBA – Thursday, 20th May 2021 | | No. Attending @ \$20 / person | |
| D- RESOURCE FUND | | | |
| If would like to make a gift to the NSW Apiarists' Association Resource Fund please complete a manual form and return this office for processing. (This payment cannot be taken online) | | | \$ |
| COVID restrictions may cause changes/ cancellation of these events. If any or all of these events are cancelled due to COVID all monies paid to will be refunded. The Organisers reserve the right to alter any or all of these details. | | | Total \$ AUD |
| Registrations including full payment must be received by 8th May 2020. Late registrations received after this date cannot be guaranteed and will only be accepted at the discretion of the Executive Council | | | |

PAYMENT METHODS:

Website ☐ www.nswaa.com.au ☐ Please charge my **Credit Card (Visa / MasterCard)** \$.....
 Credit card number: Expiry Date: CCV:
 Name on credit card: Signature: Date:



NSW Apiarists' Association Inc

ABN: 89 417 216 326

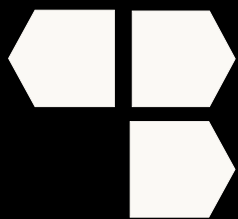
Return to: NSWAA Secretary/Treasurer

M:PO Box 117. Narellan NSW 2567 E:info@nswaa.com.au F:02 9475 4152

This document becomes a tax invoice/receipt, once full payment is made.
Please retain a copy for your records

☐ **cheque / money order** **Direct Deposit:** NSWAA Commonwealth Bank BSB: 032-710 Account: 264867 Ref: membership # & surname. If paying by direct deposit, please email or fax a copy of your remittance advice.

Please return your completed form as below. Any questions, please contact the Secretary/Treasurer, Robyn Lewis – 0466 269 811



Boutelje Products

HONEY PROCESSING EQUIPMENT



Small Systems

40-100 boxes per day



Medium Systems

100-200 boxes per day



Large Systems

200-600 boxes per day

Filling Lines

Fast and accurate



Honey Machines

Our range is world class

BEE BIOSECURITY OFFICER REPORT



Rod Bourke - NSW Bee Biosecurity Officer
NSW Department of Primary Industries - Biosecurity NSW
Tocal Ag College, Tocal Rd Paterson NSW 2320
Ph: 02 4939 8946 Mob: 0438 677 195 Email: rod.bourke@dpi.nsw.gov.au



Running your beekeeping operation with transparency.

Anyone that has been around the commercial beekeeping industry for a while will notice that it contains many colourful characters. Many of them are very good operators who should feel proud about what they have achieved and the high standards of their bee business, record keeping and extracting plants. Unfortunately, there are also those at the other end of the spectrum whom are not operating to the expected standards. These ones are probably the biggest current threat to our industry, either through them giving us all a bad reputation, providing questionable quality products, their general poor practices or through spreading a lot of otherwise preventable disease.

Therefore Point 8 in section 2 of the Code; "Beekeepers must allow their operation to be assessed" is an extremely important point that ALL beekeepers should be thinking about and routinely keeping updated records in preparation for.

8. Beekeepers must allow their operation to be assessed

The record keeping required in Part B section 5 of the Code provides the key to monitoring compliance with the Code. All beekeepers are required to keep records and beekeepers in charge of 50 or more hives are required to certify their compliance with this Code annually (see Part C section 11).

All beekeepers may at some time have their records examined by the Bee Biosecurity Officer or other authorised person to verify this self-certification and beekeepers are required to cooperate with the assessment and make their records available. An examination will include a review of the beekeeper's records and may include one or more on-site visits to inspect individual hives, appliances or equipment.

These assessments will focus on beekeepers in charge of 50 or more hives but the requirement to make records available applies to ALL beekeepers and smaller beekeepers may be inspected if a serious breach of the Code is suspected.

There will be no cost to the beekeeper for the initial assessment but if the assessor determines that the beekeeper is not in compliance with the Code, the beekeeper may be given the opportunity to rectify the failing within a specified period of time and the beekeeper will be responsible for any costs associated with re-inspection of the operation to verify compliance with the Code.

REQUIREMENT

- 8.1 If a beekeeper is notified that they will be subjected to review of records by an Assessor for compliance with the Code the beekeeper must, within 30 days of any request:
- Comply with all reasonable requests from the Assessor for access to the beekeepers records and provide any additional information.
 - Comply with all reasonable requests from the Assessor to inspect the beekeepers hives and appliances.
- 8.2 The beekeeper will be liable for the reasonable costs of any re-assessment to verify rectification of any non-compliance with the Code identified by the Assessor.

Source; Australian Honey Bee Industry Biosecurity Code of Practice (Code).

Unlike some other sectors of intensive farming (agriculture, livestock and aquaculture etc.) there has traditionally always been far less government regulation imposed on beekeeping, which has had the unfortunate effect of enabling poor quality operators to continue doing things their dangerous way.

To enable beekeepers to better understand their requirements I talked with Daryl Cooper, (Regulatory Specialist for Apiary Compliance in the DPI Regulatory Operations Unit) to get some clarity about what NSW Department of Primary Industries (DPI) will be doing in this area;

Q - Can NSW DPI Compliance audit beekeepers for Code compliance?

A - Yes, and now that beekeepers have had time to get used to the Code we will be ramping up this activity.

Q - What records are you mostly wanting to see from beekeepers?

A - Hive movements, dates that all hives were given both their spring and autumn brood checks and mite surveillance, dates when any notifiable and non-notifiable pests or diseases were found in apiaries and actions taken, as well as records of sale or disposal of hives, colonies, packages of bees and queens. All these records should be kept for 5 years.

Q - How quickly would you want to see these records?

A - Ideally the beekeeper has them on hand at the apiary or in their vehicle, otherwise provided promptly as soon as they return to base.

Q - What happens if they cannot provide them promptly?

A - Under the Biosecurity Act 2015 they are required to keep up to date records, therefore if they need some days to collate them they would be given a verbal warning and issued a direction notice to provide them within a specified time frame. If no records are provided in a reasonable time, the DPI may issue other sections or fines.



If you have brood frames like this and no records of your full brood checks then be prepared to get a fine, as you obviously aren't doing the right thing!

What all of this shows is that NSW DPI Compliance will be undertaking routine auditing on beekeepers just like they do with many other industries, so it is time to start sorting out your records and getting them up to date.

Record keeping is often a weak point for many beekeepers, and many often saying "they are not important so we shouldn't need to keep them".

Unfortunately that statement is incorrect and it is actually

VERY IMPORTANT that the appropriate records are kept. As well as for your legal requirement to keep records there is also the following 2 very important points

- Exotic pest incursion/response; should varroa, for example, arrive then NSW DPI would need access to all the relevant records to trace where beekeepers may have already moved it to (much like COVID contact tracing). As history demonstrates when Small Hive Beetle arrived into Sydney it was effectively spread by beekeepers via hive relocation, so if the “big one” arrives then we need every available piece of information available to try and stop it becoming established. This would be the biggest fight of our beekeeping lives, so we need to ensure it can succeed. Please look for exotic mites regularly!
- Business profitability/efficiency. The more successful beekeepers ALWAYS keep very good records of their operation so that they can maximise their efficiency and therefore profitability. Even smaller beekeepers can lose track of time between apiary visits, which often results in lost opportunity to produce more honey and variable hive quality, which both cost you a lot of money. Even worse is “losing” a load of bees, as this wipes a big income stream off any balance sheet. In all the recent events where larger beekeepers “forgot about” or neglected loads the outcome has always been many dead-outs and often much AFB due to widespread robbing. Accurate records would have saved these beekeepers tens or hundreds of thousands of dollars....



The National Bee Biosecurity Program is funded by the honey bee industry through a component of the agricultural honey levy, with state governments contributing in-kind resources. Plant Health Australia manage the program on behalf of Australian Honey Bee Industry Council.

AHBIC and MRL's

AHBIC have recently called two meeting of its member bodies (states, pollinators, queen breeders, ABA and honey packers).

The first meeting was to discuss AMITRAZ (mite treatment) registration and MRL. To have some context understand that NZ and Australia have a special arrangement where if the product meets the MRL in the parent country then it must be accepted by the other country regardless of their MRL. NZ has a MRL for Amitraz as they varroa.

Amitraz has special conditions for its use – brood frames treated with amitraz cannot be used in the honey super and the hive must be broodless for many weeks. Very few beekeepers would abide by the conditions. After a vigorous debate the democratic vote was not to register Amitraz and there would be a zero MRL. This will not stop NZ honey coming in but should stop other countries dumping honey into Australia. Chinese honey will probably meet the zero MRL due to the way they treat



If your hives have these in them then we really need to know that information ASAP, so do your bit for your industry and look for them and keep good records. Picture sourced from BeeAware

So what do we need to do? Always take hard copy records of your beekeeping, listing at least the minimum points as required under the code.

Keep your records up to date.

Prepare yourself for the fact that NSW DPI does have the legal right to inspect and audit your operation (no matter what your personal beliefs are they can definitely do so). Aim to run a smooth efficient operation by not having more hives and work than you can manage to cover.

The Code was developed by the Australian beekeeping industry to improve the overall standard of beekeeping here. If record keeping is one of your weak points then don't ignore this fact, and don't fight the requirement to do it, instead do something about it to improve yourself in that area.

Visit dpi.nsw.gov.au/bees for all your bee information.

their honey.

Glysohate MRL was also hotly debated. Unfortunately we had a short time frame to make a decision on this and we had no independent testing data to go on. We had some data where most honey samples were below 50ppb but a couple were above this. Japan MRL is 10ppb, Europe 50ppb and NZ 100ppb. NSWAA pushed for 100ppb. However, the motion was moved and passed at 50ppb.

Later one member body submitted a paper for 200ppb. AHBIC reconvened a meeting. Robust debate followed. NSWAA moved a motion for 100ppb but was defeated and 200ppb was also moved and defeated. The AHBIC recommendation to APVMA is 50ppb. APVMA was leaning toward 200ppb. APVMA has the final say.

Be aware that if your honey is tested and has glysohate at above the APVMA rate (yet to be determined) the packer will return your honey and not accept it.

Stephen Targett

Sydney Metro Branch

I would like to share the latest news on the Sydney Metro Branch.

Although saddened by the news That Honeyland was unable to go ahead at the Easter Show, we were excited to have been invited to provide a Covid 19 appropriate beekeeping presence as a branch. The branch executive decided to make a video presentation of opening a hive and provide a display presenting beekeeping information. This video is now in the editing stage of production. The video along with a small beekeeper presence to answer questions will be presented three to four times daily throughout the show.

Over the last eighteen months, it has been a goal of the branch to find a site where we could have an apiary, meetings, and training facility. Several sites were considered and a site at Grantham Estate was selected only to fall through at the last moment. Fortunately, we have been warmly welcomed to a new site, Chifley College Bidwell Campus, a public High School with a five acre farm and an agricultural program. We had a working bee to prepare the site and hope to move hives in as soon as possible.

The school have offered very good meeting facilities and are currently building a honey extraction room as part of the construction class. Their next project is a barbeque and pizza oven which we are really looking forward to. Chifley College has a strong community relationship which we are excited to become part of.

Like many branches, we have found it challenging to encourage new members and with new suburbs ever expanding into the green belt, space for commercial beekeeping activities is at a premium.

Just over a year ago it was motioned during a meeting that

it would be a good idea to form an Amateur Beekeeping Association club. It would offer beekeepers local to the area that we were moving to a place to learn more about beekeeping, hopefully encourage some to join the NSWAA and provide us with trainees for the courses that we run. The motion was passed by an overwhelming majority.

Several of our members worked together to form the Cumberland ABA club. A new entity to run alongside the Sydney Metro Branch of the NSWAA. There were considerations to be made to ensure that the two entities remained totally separate even though they will work together to promote beekeeping. Organising for separate executive meetings, asset registers, bank accounts, AGM's etc has been interesting, but with motivated and dedicated members, it has been accomplished.

As with all changes, there will be some settlement issues, but we are certain that they will be overcome through recognition and communication. Sydney Metro are fortunate to have a strong and positive leadership team. Paul Drew, the President of Cumberland ABA and myself are very happy to be working together.

Kind regards

Miskell Hampton

President NSWAA Sydney Metro Branch



Southern Tablelands Branch

Finally, the Southern Tablelands Branch was able to organise a face to face meeting on Saturday 20th March at Murrumbateman.

Nick Geoghegan (DPI – Program Coordinator, Apiary Sites Intensive Livestock) was the branch Guest Speaker. Nick explained how the BPass system works. He also gave branch members an update on the program, explained how to access the website and answered beekeepers questions.

18 members attended and a few members were unable to attend due to torrential rain conditions. Looking forward to our next meeting planned for June 2021.

Laurie Kershaw
President





AgriFutures®
Plan Bee

Beekeepers back genetic improvement to boost honey bee industry performance

Around half of Australian beekeepers desire more information to be made available on the queen bees they purchase, with selection traits and queen bee pedigree at the top of the list.

Wednesday, 10 March – That’s according to a survey of 196 beekeepers and 11 queen bee breeders recently conducted by the University of Sydney and the New South Wales Department of Primary Industries (DPI) as part of the Australian Government Rural R&D for Profit, Plan Bee Genetic Improvement Program.

The study also found that while overall 64% of beekeepers were happy with the quality of queens they were purchasing, less than half of large commercial beekeepers were happy. According to the study, variations in queen quality, issues around mating and queen longevity were the most cited issues when it came to the quality of queens purchased.

Dr Nadine Chapman, research fellow at the University of Sydney, School of Life and Environmental Sciences and researcher within the Plan Bee Genetic Improvement Program, said the findings will be instrumental in guiding the future of the Plan Bee program.

“Plan Bee is working with queen breeders, beekeepers and growers to build a national honey bee genetic improvement program to elevate the performance of honey bees in Australia and build its value as an industry,” she said.

“Knowing that a significant portion of the industry want higher quality queens reinforces the importance of genetic improvement and what it can deliver.

“We’ve listened to industry and will be analysing the

findings to identify areas in which we need to focus the program to ensure we are providing the most value to breeders, beekeepers and growers.”

The study confirms the importance of the Plan Bee program, with 67% of beekeepers and 73% of queen breeders agreeing that the use of modern genetic techniques as applied to other industries will increase the chance of a successful breeding program.

The research also provides guidance on what beekeepers consider the most important traits when it comes to the queens they purchase.

Honey production and brood pattern were considered to be the most important traits, followed by chalkbrood resistance, and hygienic behaviour as well as European foulbrood resistance. Interestingly, large commercial beekeepers generally scored traits associated with pest and disease resistance higher than other beekeepers.

According to Dr Chapman this information will support the development of future outputs for the Plan Bee program.

“With feedback from the industry in hand, particularly around the most important traits, we can ensure the program is aligned to the needs of the industry.

“We will be surveying industry later this year and the input of beekeepers and breeders will again be sought. Industry feedback is important and the more responses we have the more confident we can be that the opinions of industry are being represented and that we are being responsive to them.

“It’s our vision that industry insights can then be used to support breeders on their genetic improvement journeys and ultimately boost the productivity and profitability of the entire honey bee and pollination industry.”

The full survey findings are available via the Plan Bee website here: <https://www.agrifutures.com.au/wp-content/uploads/2021/03/Plan-Bee-2020-beekeeper-and-queen-bee-breeder-surveys.docx>

To keep up to date with the Plan Bee project, subscribe to the AgriFutures Honey Bee & Pollination mailing list: <https://www.agrifutures.com.au/rural-industries/honey-bee-pollination/?subscribe=1>



NSW Apiarists' Association Inc.

Honey & Apiary Related Products Competition and Show - 2021

Show Co-ordinator - Suellen Cooper PO Box 334 INVERELL NSW 2360
Email: honeyshow.nswaa@gmail.com ph: 0423 671 263



website: <https://honeyshownswaa.wixsite.com/nswaa>
@honeyshow.nswaa. <https://www.facebook.com/honeyshow.nswaa/>

HONEY CATEGORIES

| Class # | Class Description | Class # | Class Description |
|---------|-------------------------------------|---------|---|
| 1 | Liquid Honey—Yellow Box | 9 | Natural Granulated Honey—Fine Grain |
| 2 | Liquid Honey—Iron Bark | 10 | Natural Granulated Honey—Coarse Grain |
| 3 | Liquid Honey—Other Eucalypt —Light | 11 | Creamed Honey |
| 4 | Liquid Honey—Other Eucalypt —Medium | 12 | Chunk Comb in Honey (piece of honeycomb - min 4x11cm to be of same floral source as the surrounding liquid honey) |
| 5 | Liquid Honey—Other Eucalypt —Dark | 13 | Collection of Honey—3 jars comprising 1 each of different variety/colour/granulated honey—each jar labelled as to variety/style |
| 6 | Liquid Honey—Non-Eucalypt —Light | | |
| 7 | Liquid Honey—Non-Eucalypt —Medium | | |
| 8 | Liquid Honey—Non-Eucalypt —Dark | | |



BEESWAX

- 14 One Block Natural Beeswax Yellow min 1kg
- 15 One Block Natural Beeswax White min 1kg
- 16 Six (6) Natural Beeswax moulds

FRAME OF HONEY

- 21 One (1) Frame Capped Honey—Full Depth
- 22 One (1) Frame Capped Honey—Shallow Depth

BEESWAX CANDLES

- 17 Matching Pair of Rolled Beeswax Candles
- 18 Matching Pair of Dipped Beeswax Candles
- 19 Matching Pair of Moulded Beeswax Candles

APIARY COLLECTION

- 23 Collection of Apiary Products—Visually appealing display of apiary products & educational material
- Minimum 5 Apiary products—produced by the Exhibitor to be displayed. (Suggested examples—liquid honey, granulated/ creamed honey, frame & chunk honey, pollen, propolis etc)
May also include educational material suitable for public/community awareness. Other items forming part of display need not be produced by the exhibitor but must not to show commercial or maker labels nor advertising and must be an Australian product related to Apiary products.
Maximum space 1mt x 1 mt square.

POLLEN

- 20 Natural Pollen (min 100mL)



NSW Apiarists' Association Inc.

Honey & Apiary Related Products Competition and Show - 2021

Show Co-ordinator - Suellen Cooper PO Box 334 INVERELL NSW 2360
email: honeyshow.nswaa@gmail.com ph: 0423 671 263



website: www.honeyshownswaa.wixsite.com/nswaa
@honeyshow.nswaa <https://www.facebook.com/honeyshow.nswaa/>

PHOTOGRAPHY CATEGORIES

| Class # | Class Description | Class # | Class Description |
|---------|--|---------|---|
| 24 a | Bees in Action - Colour (Depicting Bees/Beekeepers in action) | 26 | Liquid Gold - Colour (Honey—may be in hive/processing/consuming) |
| 24 b | Bees in Action - Black & White (Depicting Bees/Beekeepers in action) | 27 | Natural Beauty - Colour (Bees in the Landscape) |
| 25 a | Bees Vital for our Food - Colour (Depicting Bees in Food Crop Pollination) | 28 | Strength in Numbers - Colour (Swarms/colony) |
| 25 b | Bees Vital for our Food - Black & White (Depicting Bees in Food Crop Pollination) | 29 | Solitary in Nature - Colour (Native Solitary Bees or Single Bee in work) |

COOKING CATEGORIES

- 30 Feature Cake—Apimondia Australia 2007
Feature Recipe - refer Special Conditions
- 31 Cake – whole. To include at least one feature ingredient
specified in special conditions
- 32 Slice – (cut & presented as min 3 portions)
To include at least one feature ingredient specified in
special conditions
- 33 Tart— whole. To include at least one feature ingredient
specified in special conditions
- 34 Biscuit—min 6 biscuits of same batch & ingredients.
To include at least one feature ingredient specified in
special conditions
- 35 High Tea—selection of min 5 different portions suitable
for high tea—each portion to use a different feature
ingredient from the pollination reliant ingredient list in
special conditions.
Each portion to have a label with all ingredients.





NSW Apiarists' Association Inc.

Honey & Apiary Related Products Competition & Show - 2021

Show Co-ordinator – Suellen Cooper PO Box 334 INVERELL NSW 2360

Email: honeyshow.nswaa@gmail.com ph: 0423 671 263 leave message

Website: www.honeyshownswaa.wixsite.com/nswaa

@honeyshow.nswaa

<https://www.facebook.com/honeyshow.nswaa/>



GENERAL CONDITIONS OF ENTRY – ALL ENTRIES

- 1 Entries in all classes must be the bona fides product/work/creation solely of the registered Exhibitor/s
- 2 Entries in all classes must not show any exhibitor/creator/maker/producer identification
- 3 Entries are limited to maximum 3 per exhibitor in any one class, subsequent entry in a class must be a different floral source (honey), extraction batch (wax), design (candle), image (photography), ingredients (cooking)
- 4 Entries on attached entry form fully completed and received by Show Co-ordinator either email or post accepted up to **4PM TUESDAY 20.04.2021 – invoice & payment details/reference details will be EMAILED to the exhibitor no later than 5pm WEDNESDAY 21.04.2021 and proof of payment to be provided to NSWAA Secretary by 4pm Tuesday 27.04.2021 for entries to be confirmed as accepted**
- 5 Entry Fee – Classes 1-23 & 24 to 29 **\$8.00** per exhibit. Classes 30-35 **\$5.00** per exhibit.
- 6 Cancellations received up to 4pm Tuesday 27.04.21 eligible for refund, cancellations after this time no refund issued.
- 7 Exhibit labels will be posted to each confirmed/accepted exhibitor from 27.04.2021 to have affixed to their exhibit items prior to presenting exhibits at the Show
- 8 Exhibits will be accepted in person at the West Leagues Club, Tamworth from 10am – 6pm Monday 17.05.2021 and 8am – 10am Tuesday 18.05.2021. Courier deliveries of exhibits only accepted at the venue during these times.
- 9 Exhibits may be collected from 4pm – 6pm Thursday 20.05.21 and 9am to 4pm Friday 21.05.21
- 10 Exhibits not collected by 4pm Friday 21.05.2021 will be donated to a local charity. Requests for return of exhibits by courier or post to be arranged & prepaid by the Exhibitor & notified to Show Co-ordinator with entry.

SPECIAL CONDITIONS

HONEY, HONEYCOMB, BEESWAX, APIARY PRODUCTS COLLECTION,

1. All classes are limited to maximum 3 per exhibitor in any one class. Multiple entries in the same class must be of a different floral source (honey), extraction batch (wax), design (wax moulds & candles).
2. Entries into Classes 1 to 16, 20 to 23. Honey, Honey Comb, Beeswax, Pollen & Apiary Collection, must be that solely of the Exhibitor/s who is a validly registered beekeeper with their State or Territory of residence or an immediate household family member. (Currency and Validity of Registration will be verified with the relevant state authority)
3. Entries in Classes 1 to 13 - liquid honey, candy honey, creamed honey are to be presented in clear glass round straight-walled jars of 375 ml (500gm) filled to the fill line, with white lids (may be metal or plastic).
4. Entries in Class 13 – collection of liquid honeys, & Class 23 Apiary Products Collection – items to be clearly & legibly labelled as to floral resource (Class 13 & 23) and product name (Class 23). No Exhibitor/creator/producer identification to be shown.
5. Entries in Classes 14-15 Beeswax to be of minimum 1kg to max 3kg weight in a single block of wax in round, square or rectangle shape with plain surfaces. Textured, shaped, embossed surfaces not eligible.
6. Entries in Class 16 – Beeswax Moulds – each item in the exhibit to be poured from same wax batch. Moulds may be identical or form a decorative/formative grouping. Must be 6 individual pieces. Subsequent entries by an exhibitor in this class must be of different extraction batches and be of different design.
7. Entries in Class 20 – Pollen must be from natural pollen collected from foraging bees from the Exhibitors own apiary. Shown in minimum 100mL- filled to fill line - glass jar with white lid. Commercial/purchased pollen is not eligible for entry.
8. Entries in Classes 21 & 22 Frame Honey to be shown in fully enclosed wooden display case with clear glass or perspex viewing panels.
9. Entries in Apiary Products Collection Display to be displayed within a maximum area of 90cm x 90cm square. A separate bare table will be made available for each entry in this class for mounting as a stand-alone display (display should consider viewing from all sides). A minimum of 5 different types of apiary products – (ie liquid honey, granulated honey, pollen, beeswax, propolis, honey frames, etc) clearly labelled with product & floral type are to be displayed. Educational content will also be taken into consideration in judging. All table dressing and props etc are the responsibility of the Exhibitor to supply. Set up for entries in this display must be done by the Exhibitor (extra helpers for setup to be organised by the Exhibitor) in person and set-up completed no later than 10am Tuesday 18th May 2021. **Couriered entries NOT ACCEPTED** for this class

BEESWAX CANDLES

1. Entries into Classes 17 to 19 Beeswax Candles, must be the creation solely of the Exhibitor using only Australian produced pure Beeswax. The raw product Beeswax need not have been the produced by the Exhibitor.
2. Entries in Class 17 to 19 Beeswax Candles to be presented as a pair in an upright position suitable for display in either candle holders or candle tray/plate etc.
3. Entries limited to maximum 3 per exhibitor in any one class. Subsequent entries in the same class must be of a different design.

PHOTOGRAPHY

1. Entries into Classes 24 to 29. Photography must be the work solely of the Exhibitor
2. Exhibitor may enter any/all classes (maximum 3 entries per class). An image is eligible for entry to only one class.
3. The exhibitor, by entering this section shall be taken to have provided permission to use by NSWAA and Honeybee News for publication & promotion with the exhibitors credits acknowledged.
4. Entries in all Photography classes shall be presented on black or white card with a border of min 1cm to max 3cm. Image size to be of minimum 5 x 7 (12.7 x 17.8 cm) to maximum 10 x 12 (25.4 x 30.5 cm).
5. All images entered in Photography section must be of Australian origin depicting beekeeping and/or bee pollination practices in Australia and/or Australian Native Bees.
6. Winning images will be used for the production of 2021 Wall calendar, available for purchase through NSWAA Show Co-ordinator before 30th September 2021 for delivery by approx end November 2021. Exhibitors of winning images will receive a complimentary copy of the published calendar.
7. Images to be made available to NSWAA Show Co-ordinator in digital high resolution format suitable for high quality print publications by 30th June 2021.

COOKING

1. Entries into Classes 30 to 35 Cooking must be the creation solely of the Exhibitor with Feature ingredients (honey or pollination reliant crop) being from only Australian product.
2. Entries limited to maximum 3 per exhibitor in any one class. Subsequent entries in the same class must be of a different feature ingredient and composition.
3. Feature ingredients are pure Australian honey; and honeybee pollination reliant products (90% or greater as per RIRDC Pub No 10-081 August 2010) - being any of:
Almond, Apple, Avocado, Blueberry, Cherries, Cucumber, Macadamia, Mango, Pear, Pumpkin, Rockmelon
4. Feature Class – Apimondia Australia 2007 Honey Cake – see recipe below
5. Entries in Class 30 to 35 Cooking exhibits to be presented on white paper or plastic plate of suitable size for the exhibit, covered with cling film. Label to be affixed to each entry with list of ALL ingredients in the exhibit in order of volume and identifying the Australian produced Feature Ingredient & that it is fresh, frozen, dried, canned etc.

FEATURE RECIPE

HONEY CAKE – AS EXHIBITED AT APIMONDIA AUSTRALIA 2007

| | |
|-------------------------------|----------------------------|
| 125 g butter | 85g Pure Australian Honey |
| 1 teaspoon vanilla essence | 2 eggs |
| 250 g self raising flour | 1 teaspoon ground cinnamon |
| ½ teaspoon ground mixed spice | 180 mL beer |

Beat butter and honey until light and creamy, add the vanilla and eggs. Beat until well mixed.
Sift flour and spices together, and fold them into the creamed butter and honey mixture, alternately with the beer.
In a lined & greased 20cm tin, bake for 30 minutes at 180 degrees C

**** The cake is partially cooked at this point. Do not cool and do not remove from tin.

Topping: 60 g butter, 125 g Pure Australian Honey, 90 g flaked Almonds, 25g shredded coconut.

Melt butter and honey, fold in almonds and coconut.

Spread quickly on top of partially cooked cake and return to oven for further 15 minutes

When cake is cooked, allow to cool before removing from tin.

This cake is to be presented without further icing or decoration.

Class 30 - Judging Points

| | | | |
|---------------|------------|----------|-----------------|
| Appearance 25 | Texture 25 | Taste 30 | Presentation 20 |
|---------------|------------|----------|-----------------|

CLASSES 31 – 35 POLLINATION RELIANT FEATURE INGREDIENTS - Judging Points

| | | | | |
|---------------|------------|----------|---|---------------|
| Appearance 25 | Texture 20 | Taste 25 | Suitability of Feature Ingredient to the exhibit 15 | Creativity 15 |
|---------------|------------|----------|---|---------------|



BEEKEEPING SUPPLIES AUSTRALIA & NEW ZEALAND

CONTACT:

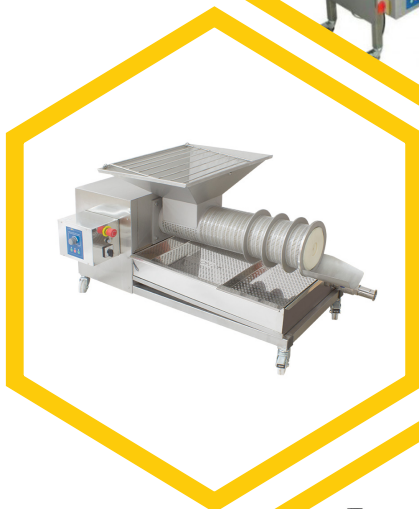
Send us an email: info@lysonau.com.au

Visit our website: www.lysonau.com.au

Give us a call: 0434 476 067 or 0407 070 670

Check us out on facebook: www.facebook.com/lysonau

WE SUPPLY ALL EQUIPMENT FOR BEEKEEPERS FROM HOBBY TO COMMERCIAL



Polystyrene Hives, Nucleus Hives, Mating Hives, Travelling Hive Boxes, Feeders (hive & stand alone), Honey Extraction Equipment (2 frame up to 80 frame), Honey Bottlers (manual to auto), Capping Extruders, Wax Melters, Settler Tanks up to 2000L with or without heating & mixer, Dehydraters & Creamers, Queen Breeding Equipment, Queen Rearing Equipment, Honey Sumps & Filters, Pollen Dryers, Suits, Smokers and much, much more....

Tamworth Branch NSW Apiarists' Association Inc.

**Saturday 22 MAY 2021 9AM – 4PM
Following NSW State Conference 2021**



**TAMWORTH JOCKEY CLUB
BRITTEN ROAD,
TAMWORTH NSW 2340**

**Gold Coin Entry
Under 18's Free
Public Welcome**



Beekkeeping Field Day



Guest Speakers

From 10AM

Including

**Rod Bourke - Bee Biosecurity
Officer from the DPI**

An ask the experts session

with

**Ray Hull - 3rd Generation
Beekeeper and Norm Maher - 45
years Beekeeping Experience.**

**Bring your Questions for this
interactive session**



Meals & Refreshments

**Meals and
refreshments are
available all day**

**CWA Bake Sale for
homemade sweets and
cakes**



Expressions of Interest

Beekeeping Trade Exhibits

4 x 4 Equipment

Truck & Ute Displays

Material Handling Stands

General Market Stalls

For Stall bookings please contact Justin Wall. 0437690393. Justin_Wall@icloud.com



**Department of
Primary Industries**

FOR SALE:

600 x 10fr Beehives w/sites [public lands & 40 + private sites -introduction]
extra boxes
new frames
excluders etc
plus 2013 Western Star T/Top [200K km]
2020 Moore Dog trailer
2020 Avant 635 loader
72 fr Beequip extracting plant w/centrifuge
2020 Beequip uncapper w/prickler
3 honey sumps
settling tank
pumps plus much more!

P.O.A.

Ph: 0429 444 898 -Dave. NSW

Cover Photos

Do you have a bee related photograph that you would like to see on the cover of Australia's Honeybee News?

Email it to
honeybeenews@icloud.com



100% Australian Honey....Always!

- 100% Australian family owned
- Family beekeepers since the 1880's
- Caring about bees, beekeepers, nature and families
- Putting people before profits to build a better beekeeping legacy
- Treating others like we'd like to be treated to make a difference for food security

To make your honey or beeswax make more of a difference contact Steven Goldsworthy on 0419 559 242 or beekeeper@beechworthhoney.com.au

beechworthhoney.com.au



EZYLoader

Ezyloader 125 - 125kgs Suits light trucks
Ezyloader 200 - 200kgs Suits medium to large trucks
Ezyloader 300 - 300kgs Truck mounted
Suits medium to large trucks

- Manufactured in Australia
- Unique levelling feature for ease of load handling
- Boom brake system – ease of under-supering and requeening
- Split boom for load positioning
- 6 Different models – remote control option
- Lifting capacity up to 500kg
- Small footprint—no wasted valuable load space
- Fully self contained and low maintenance
- One man operation with controls at the load
- Special range of attachments

All enquiries please contact Mark
SALES | SERVICE | REFURBISHMENT

M & K STAFFORD ENGINEERING PTY LTD
2/48 Piper Drive Ballina NSW 2478
B 02 6686 9736 | F 02 6686 9736 | M 0412 426 132
www.ezyloader.com | mail@ezyloader.com

POLLEN



100% PURE NATURAL POLLEN

Just as the bees collect it for themselves!

We have irradiated pollen as per AQIS standard

Just the right thing to get a broodnest started

for almond pollination

Pollen available in 5kgs bags

1 x 5 kg bag \$16/kg

4 x 5kg bags 1 Box \$14/kg

20 x 5kg bags 5 Boxes \$13/kg

Plus freight

Contact: Browns Bees Australia
Terry Brown Ph: 02 6886 1448
Email: brownsbees@gmail.com



DALRYMPLE VIEW

APIARY SUPPLIES

**MANUFACTURERS AND SUPPLIERS
OF ALL YOUR BEEKEEPING NEEDS**

- **FRAMES**
- **SUPERS**
- **CLEARER BOARDS**
- **EXCLUDERS AND MORE**

**ALL
AUSTRALIAN
MADE USING
QUALITY
AUSTRALIAN
HOOP PINE**



**TRY OUR NEW
EXCLUDERS**

Built to last
Metal Construction
Stronger Rim & Core
Made Locally by
Dalrymple View using
ORIGINAL BEECO DESIGN

Stockist of most other beekeeping supplies

65 Forde Street Allora QLD 4362 • 0448 717 051
www.dalrympleview.com.au • sales@dalrympleview.com.au

POWER SHOT

TURBO FRAME CLEANERS



**New
Innovation!**

**Check
Out These
Results!**

**Frame cleaner + Hot Wash packages
on special now!**

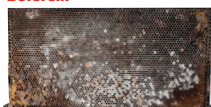
(available until end November 2019)

Keep putting off the messy and thankless task of cleaning hive frames?

Welcome to the new innovative Powershot Turbo Frame Cleaner, giving you a comparative, mess free and quick solution for cleaning frames. No need to pre-soak or steam frames prior to cleaning. These units are also adjustable to take the 3 sizes of plastic frames making it suitable for all users.

Obtain exceptional results for very little effort with these frame cleaners. Testing has proven 95% or better cleaning result even on the most difficult frames.

Before...



After...



**HOTWASH
HW1211
HIGH-PRESSURE WASHERS
-HOT WATER**

| Model | Description | Min. Pressure Req. | Min. Volume Req. | Max. Temp. |
|----------|--------------------------------|--------------------|------------------|------------|
| PS1000FC | Single Side Hive Frame Cleaner | 1800psi | 11L/pm | 60° |
| PS2000FC | Double Side Hive Frame Cleaner | 1800psi | 19L/pm | 60° |

Buy now for the season - Call Andrew on 0400 259 646 Email: sales@powerblast.com.au

www.powershot.co.nz

VOLUNTARY CONTRIBUTIONS FOR 2018-2019 GRATEFULLY RECEIVED

AUSTRALIAN HONEY BEE INDUSTRY COUNCIL INC



PO Box 42
Macquarie ACT 2614

(AHBIC)
ABN: 63 939 614 424

Phone: 0402 467 780
Email: ahbic@honeybee.org.au

FRIENDS of AHBIC

Supporting Australia's National Beekeeping Industry with a voluntary contribution

| "Friend" Category | Investment | "Friend" Category | Investment |
|-------------------|------------------|-------------------|------------------|
| PLATINUM PLUS | \$60,000 | SILVER | \$ 1,000 & above |
| PLATINUM | \$20,000 & above | BRONZE | \$ 500 & above |
| GOLD PLUS | \$ 5,000 & above | COPPER | \$ 100 & above |
| GOLD | \$ 2,000 & above | OTHER | Up to \$100 |

Contribution Details

Name:

Address:

.....State.....Postcode.....

Email: (Please PRINT clearly).....

Phone: Date:

Contribution by: DIRECT DEPOSIT: \$.....

CHEQUE: \$.....

Please return this form to AHBIC by post or email
to ensure your contribution is recorded correctly

POST: AHBIC, PO Box 42, Macquarie, ACT 2614
EMAIL: ahbic@honeybee.org.au

Account Name: Australian Honey Bee Industry Council Inc

Banking
Details

Bank: Bendigo Bank

BSB: 633 000

Account No: 150 976 405

Reference: Please include your NAME as the Direct Deposit Reference



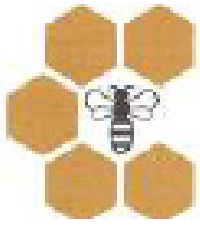
Contribution by credit card is now available through the AHBIC website at
<https://honeybee.org.au/friends-of-ahbic-voluntary-contribution/>

Please indicate YES or NO

1. _____ Please publicise my name in the AHBIC Newsletter (as financial supporter **and** in monetary category)
2. _____ Please publicise my name in the AHBIC Newsletter (as financial supporter in **undisclosed** monetary category)
3. _____ I would like to receive the AHBIC Annual Report
4. _____ Please acknowledge this voluntary contribution with a Tax Receipt (email preferred)

Thank you for supporting AHBIC to continue supporting your industry at a national level.

It is gratefully appreciated.



AUSTRALIAN HONEY BEE INDUSTRY COUNCIL INC (AHBIC) UPDATE

Full newsletter available from <http://honeybee.org.au>

NEWS FROM THE CHAIR

1. I watched the ABC Landline program celebrating 30 years on 21 March 2021. Imagine my disappointment when there was not one mention of honey bees, pollination or honey.

2. Hopefully there are no beekeepers in Australia using imported beeswax foundation. Yes it is cheap and the temptation is there to buy at that cheap price but in the long run it has the potential to do damage to our reputation for good clean beeswax.

As you know AHBIC has had some imported foundation analysed and it is adulterated with paraffin and has chemical residues that have most likely resulted from Varroa treatments. Thank you to those who have supplied me with samples. We are awaiting the results from the last two samples sent away. One of these was pellets and previously we had a block of beeswax sold by a major store that was also adulterated and contained chemical residues. That block has been withdrawn from sale by that store.

AHBIC is trying to find a way for beeswax that is being imported into Australia, either as foundation or block, to be checked for adulteration and chemical residues.

As beeswax is not classed as a food we cannot have it examined under the imported foods inspections. AHBIC has lodged complaints with the Australian Competition and Consumer Commission (ACCC) and to date we have not heard of any action they have taken. We will enquire again as to what is happening.

AHBIC is writing to Minister Littleproud to see if there is some way this inspection of imported beeswax can be put in place.

So the best way you can help is not to use any imported beeswax foundation.

3. AHBIC put in a submission to the Trade Advice Notice on APIVAR 500 mg Bee Hive Strips For Honey Bees for use in honey bee hives. After a Council meeting the AHBIC submission was for amitraz, the active ingredient of Apivar, not to be shelf registered and no Maximum Residue Limit (MRL) to be set.

4. With the flooding rain that the east coast of Australia has experienced in the past week or so, I hope that there have not been many bee hives lost due to being washed away or inundated. In Queensland it seems that there will be minimal losses. New South Wales has not fared as well and there are reports coming to hand of hives being

either washed away or inundated.

The rain should help in the long run by helping our flora get back to something like normal. Even with this rain there is still a big part of Queensland that is still drought declared.

There are disaster recovery payments available through the various Government agencies. If you have been affected check to see what assistance you are eligible for.

Your State beekeeping association will, I am sure, have details.

AHBIC AGM

The AHBIC AGM will be held on Sunday 11 July 2021 in Bendigo Victoria. There will be three positions up for election as follows:

- The Deputy Chair. Stephen Fewster retires from this position and is eligible for re-election.

- Two (2) positions on the Executive. Leilani Leyland and Therese Kershaw retire and are eligible for reelection.

Nominations for these positions will be taken at the AGM.

Also note section 7.6 of the AHBIC Constitution has the eligibility criteria for being on the Executive. This includes being a voluntary contributor to AHBIC i.e. being a friend of AHBIC.

Evaluation of the Farm Management Deposits Scheme

Please see the request to complete a survey for beekeepers that use the Farm Management Deposits Scheme (FMDS).

AHBIC will be involved in the roundtable consultation. To support this process it would be helpful for AHBIC to gain a understanding of the number of beekeepers that use the FMDS.

AHBIC would be looking for beekeepers to indicate, on a confidential basis, if they are using FMD's and if they believe they are of a benefit and should be continued.

Beekeepers are encouraged to complete the survey or put in a submission as well as indicate to AHBIC if they using the FMDS. Have Your Say Closing on the 26 April 2021. <https://haveyoursay.awe.gov.au/farm-management-deposits-scheme-evaluation>

HUNTER VALLEY APIARIES

Col & Linda Wilson PO Box 180, KURRI KURRI NSW 2327 Ph/Fax: (02) 4930 4950

FOUNDATION

PLASTIC

The Best Plastic Foundation
You Can Buy
Dominates Sales in
USA and CANADA
Sizes, FD, WSP, Manly, Ideal

Full **PLASTIC FRAMES**
available

WAX

We can mill to the thickness
you require
Have your own wax milled or
exchanged for foundation in
stock

DRONE COMB FOUNDATION
available

Wax bought or exchanged for
bee goods

FRAMES Mahurangi NZ
Premium Quality

For Plastic and Wax Foundation

BEE BOXES

WEATHERTEX Lids & Bottom
Boards

QUEEN EXCLUDERS

FRAME FEEDERS

QUEEN CELLS

AFB
TEST KITS

Quick and easy to use
Results in just 3 minutes

SWARM ATTRACTANTS
APITHOR for Small Hive Beetle

NOZEVIT

HIVES CAN BE TREATED FOR LESS THAN \$1

Healthy bee colonies build brood faster in the
Spring, and will winter extremely well when
their intestinal integrity is intact. By using all
natural Nozevit as a food supplement for intestinal
cleansing for internal ailments.

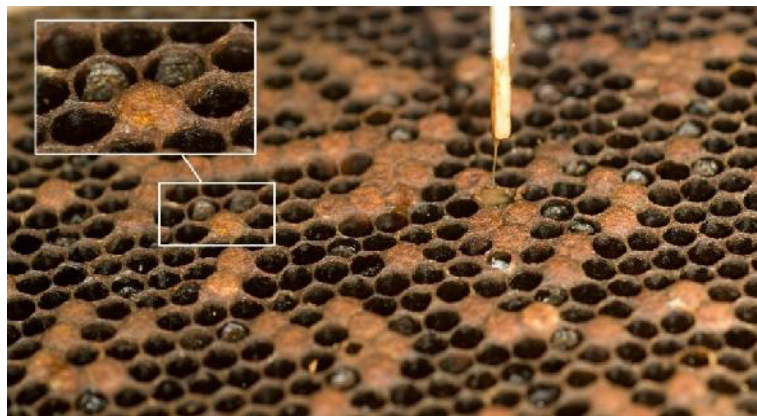
i.e. nosema

For All Your BEEKEEPING SUPPLIES

Email: honeybee100@skymesh.com.au

Phone: 02 4930 4950

Could this be happening to your beehives?



Disease in bee equipment can be a major problem if left untreated.

The devastating effect diseases such as American and European Foulbrood can cause is a constant concern for beekeepers.

Treatment using Gamma Irradiation is a well established and proven method for eliminating pathogens from bee equipment and killing all forms of insect and pest contamination.

Irradiation also assists with increasing honey yield.

Is sterilisation a key step in your production process?

Gamma Irradiation provides the most effective sterilisation solution for manufacturers of medicinal honey products.

Sterilisation ensures a quality product that meets all regulatory and business requirements.

Steritech has been a provider of Gamma Irradiation services to the medicinal honey industry for many years. Using our expertise and knowledge we can assist you with your sterilisation requirements.



YOU CAN RELY ON IRRADIATION – YOU CAN RELY ON STERITECH

Your bees are calling out to you!

Steritech has been providing Gamma Irradiation to the beekeeping industry for many years. In fact, the irradiation of bee equipment was pioneered in Australia!

Whether our service is used to eliminate current contamination or is used as a preventative measure, Steritech is always happy to help our beekeepers.

From beehives to medical applications, Steritech is there for you.

Steritech is a proud member of the NSWAA



Innovation is driven from ideas

The concept of using irradiation in the beekeeping industry all started with an idea on how to do things a bit differently.

We are constantly trying to develop ways to utilise our processes to help your industry in lots of new ways.

But without your ideas and input, gamma irradiation would not be where it is today.

Come and share your thoughts and ideas with us. You could hold the key to developing a new application that could alter the beekeeping industry forever.



Please contact us about any inspirational ideas you have



www.steritech.com.au

STERITECH NSW

Jamie Crighton

National Business Development Manager

Tel: 02 8785 4400

Email: jcrighton@steritech.com.au

STERITECH QLD

Glenn Robertson

QLD General Manager

Tel: 07 3293 1566

Email: grobertson@steritech.com.au

STERITECH VIC

Raymond Bryden

VIC Sales Executive

Tel: 03 8726 5566

Email: rbryden@steritech.com.au

BEEKEEPING JOURNALS

AMERICAN BEE JOURNAL

For beekeeping information read

The American Bee Journal

Editorial emphasis on practical-down-to-earth material,
including questions and answers.

1 year US\$52.00, 2 years US\$99.00

Digital Edition price US\$16.00

Please inquire for airmail - VISA, MasterCard accepted

For more information or free sample copy, write to:

51 South 2nd Street, Hamilton, Illinois, 62341

Tel: (217) 847 3324 Fax: (217) 847 3660

Email: abj@dadant.com

Website: www.americanbeejournal.com

The American Bee Journal is the largest monthly
apiculture magazine in the world.

BEE CULTURE

The Magazine of American Beekeeping

Published Monthly - Free Calendar with Subscription

www.BeeCulture.com for details

AUSTRALIAN BEE JOURNAL

The Journal of the Victorian Apiarists' Association Inc.

Published monthly

Annual subscription: \$82 Australia / \$120 overseas

For more information and a free sample copy

Contact: The Editor

PO Box 42, Newstead VIC 3462

Email: abjeditors@yahoo.com

THE BUZZ!

South Australian Apiarists' Association Newsletter

Published 5 times annually

Included in annual membership subscription to SAAA
(minimum subs \$100.00)

For further information please contact:

The Secretary, SAAA

PO Box 326 Mt Compass SA 5290

Ph: 0419 982 102

Email: secretary@saaa.org.au

THE AMATEUR BEEKEEPER

Bi-monthly newsletter for

The Amateur Beekeepers' Association Inc..

Editor: Sue Carney

Email: editor@beekeepers.asn.au

THE NEW ZEALAND BEEKEEPER

Official Journal of Apiculture New Zealand Inc. - www.
nba.org.nz

Accounts & Subscriptions: Pauline Downie

PO Box 25207 Wellington 6146 New Zealand

Phone: 04 471 6254

Email: secretary@nba.org.nz

Advertising: Certa Solutions

PO Box 2494, Dunedin 9044, New Zealand

Ph: 0800 404 515

Email: beekeeper@certasolutions.co.nz

ADVERTISERS

| | |
|-----------------------------------|-------|
| Apiary Cots | 6 |
| Apimaye Hives | 20 |
| Australian Queen Bee Exporters | 12 |
| Australian Queen Bee Line Pty Ltd | 18 |
| Avant Equipment | 7 |
| Bee Build | 21 |
| Bee Engineering | 12 |
| Beechworth Honey Pty Ltd | 44 |
| BeePlas Australia | 12 |
| Berringa | 21 |
| Boutelje Products Ltd | 32 |
| B-QUAL Australia Pty Ltd | 12 |
| Browns Bees Australia | 45 |
| Burnett Bee Keeping Supplies | 2 |
| Capilano Honey Ltd | 51 |
| Clayton Plastics | 22/23 |
| Covey Queens | 17 |
| Dalrymple View Apiary Supplies | 45 |
| Demise | 19 |
| Denmar Apiaries | 2 |
| Ezyloader | 44 |
| Honey Down Under | 2 |
| Honey Wanted | 6 |
| Hornsby Beekeeping Supplies | 28 |
| Hummerbee Forklifts | 9 |
| Hunter Valley Apiaries | 48 |
| Kaptarlift | 20 |
| Lyson Beekeeping Supplies | 42 |
| MyApiary | 19 |
| NUPLAS - Plastic Hives | 26/27 |
| Power Shot | 45 |
| Riverina Beekeeping Supplies | 15 |
| SCHÜTZ | 52 |
| Simons Boiler Co | 8 |
| Spitwater | 14 |
| Steritech Pty Ltd | 49 |
| Superbee | 21 |
| Top Bait Plus | 19 |
| WFI Insurance | 13 |
| www.candlemaking.com.au | 2 |

100% AUSSIE HONEY



PROUDLY AUSSIE MADE & OWNED

Capilano: Australian owned and operated, since 1953.

Capilano is owned by a wholly Australian company, Hive + Wellness Australia that is proudly headquartered in Richlands, QLD.

The honey used in Capilano products is supplied by over 800 Australian beekeepers and is packed and marketed by around 150 hardworking Australian locals across three sites in Richlands, QLD, Maryborough, VIC, and Bayswater, WA.

Hive + Wellness Australia is committed to innovation and quality in Australian bee products. We are equally dedicated to protecting and fostering the growth of the Australian Apicultural industry and your family's hardworking beekeeping businesses.

We are actively seeking to expand our supplier network, sourcing quality honey and beeswax from new and existing beekeepers.

To become a supplier, please contact our Honey Supply Manager, Stephen Covey:
P: 0419 431 652 **E:** s.covey@hivewell.com

Hive+Wellness
A U S T R A L I A

Proud supporter of
100% Australian Honey



THE HONEY INDUSTRY IS SWARMING TO **SCHÜTZ ECOBULK**



FEATURES INCLUDE:

- Economically designed for the safe transport and storage of honey – at least 25% more efficient than traditional packaging
- Can be easily stacked up to 3 ECOBULK high
- Capacity MX ECOBULK – 1,000L (275 Gal)
- Manufactured under HACCP conditions in a clean environment

CONTACT SCHÜTZ TO ORDER YOUR ECOBULK TODAY AT SALESAU@SCHUETZ.NET OR ON 03 9360 9291